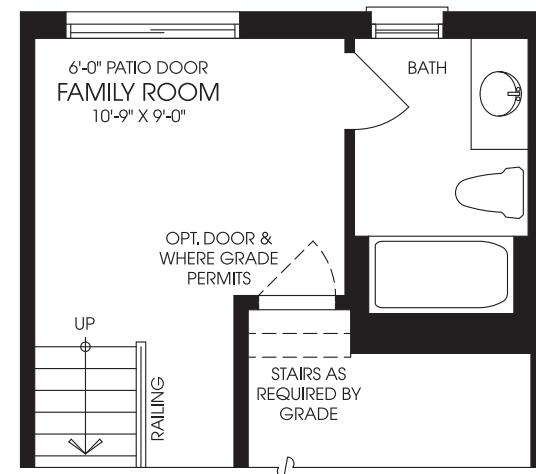
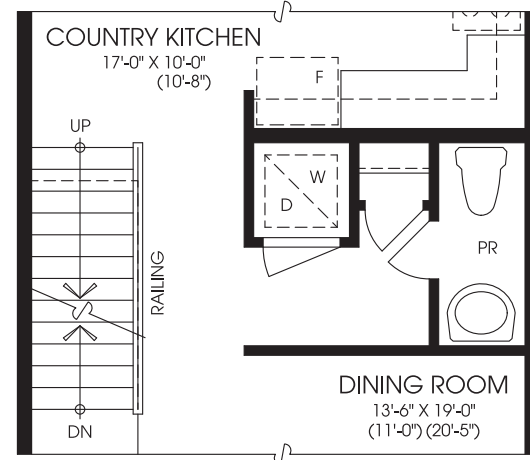




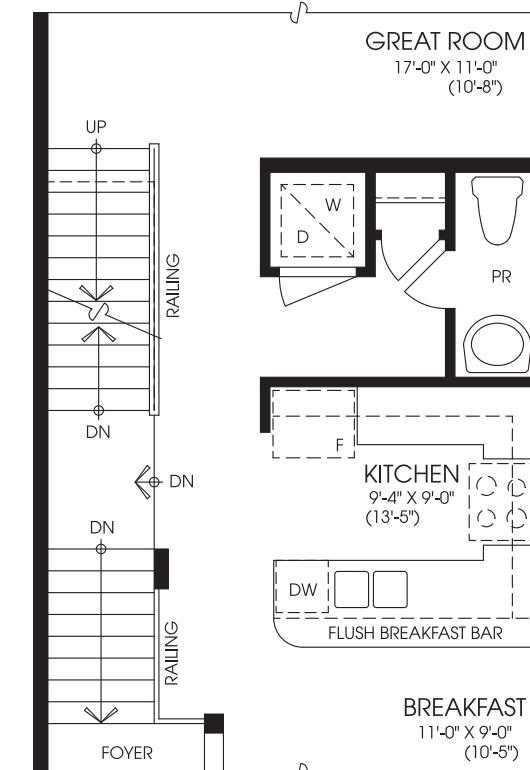
**ZIA ABBAS**  
[www.CondoOnly.com](http://www.CondoOnly.com)  
[www.WorldClassRealtyPoint.com](http://www.WorldClassRealtyPoint.com)  
**(416) 666-4545**



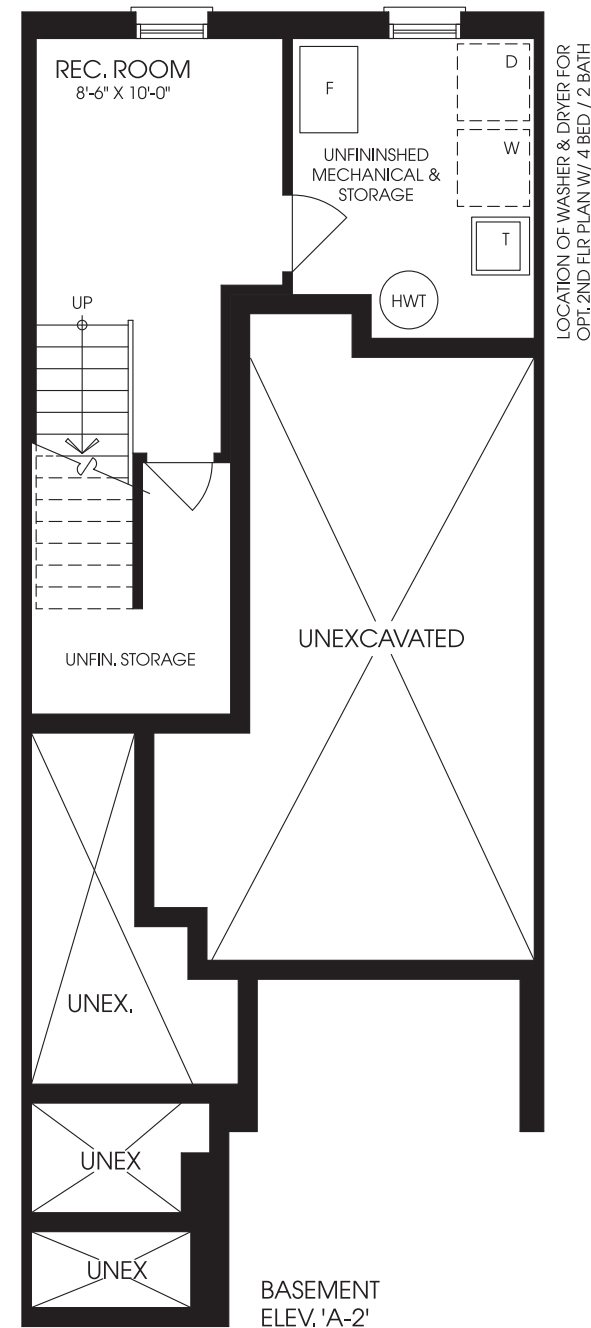
PARTIAL OPT. LOWER FLOOR W/ BATH  
ELEV. 'A-2'



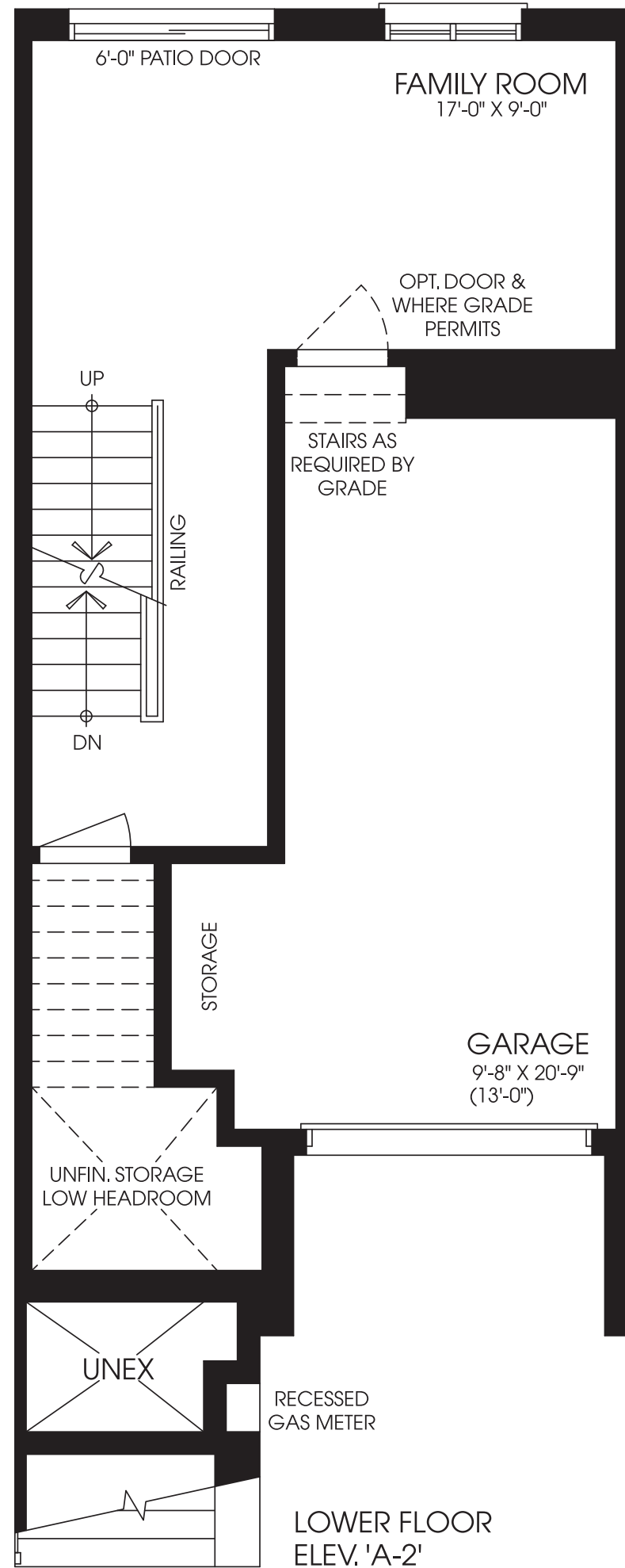
PARTIAL OPT. MAIN FLOOR W/ LAUNDRY  
ELEV. 'A-2'



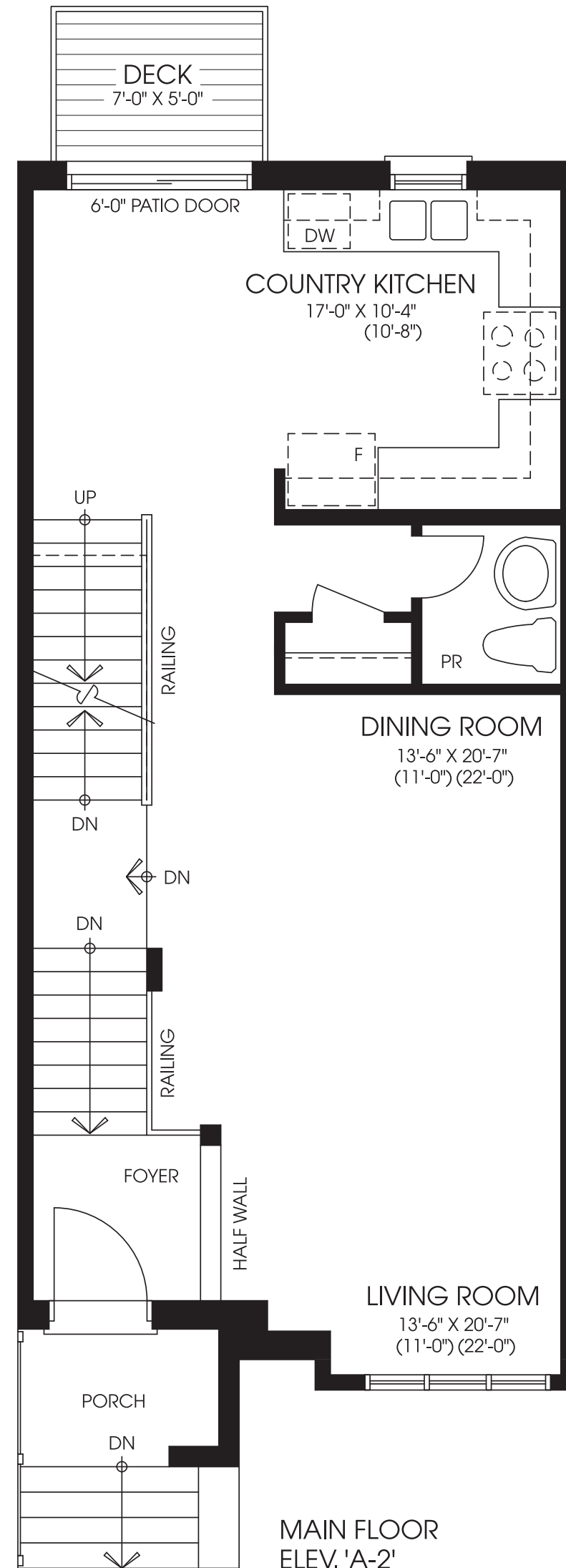
PARTIAL OPT. ALT. MAIN FLOOR W/ LAUNDRY  
ELEV. 'A-2'



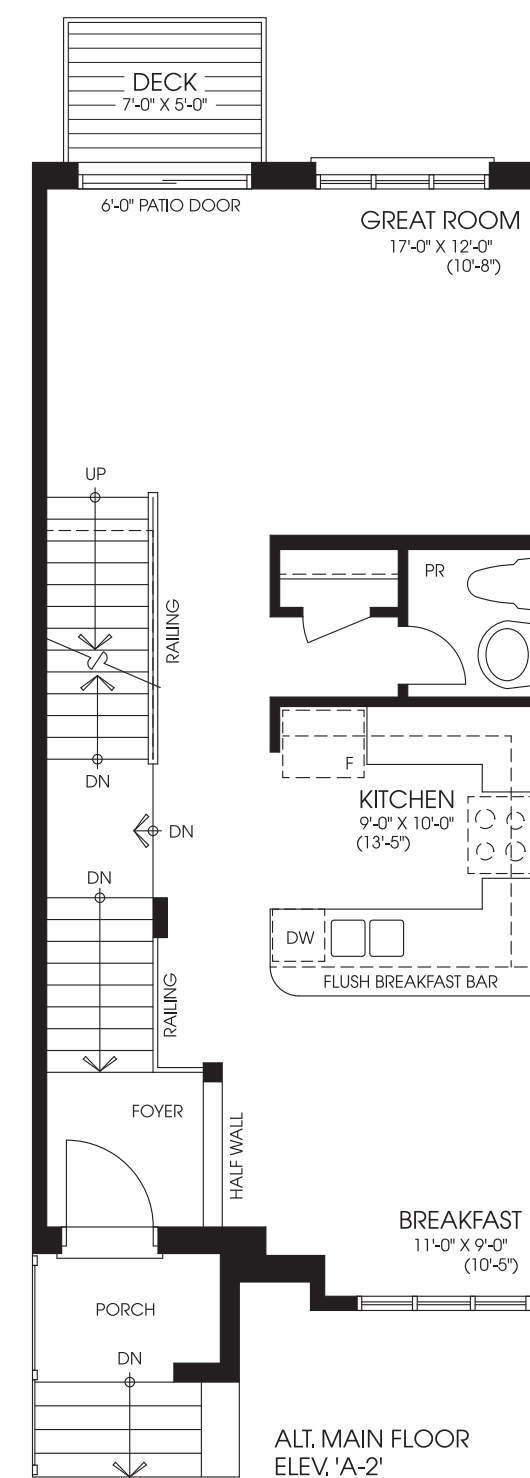
BASEMENT  
ELEV. 'A-2'



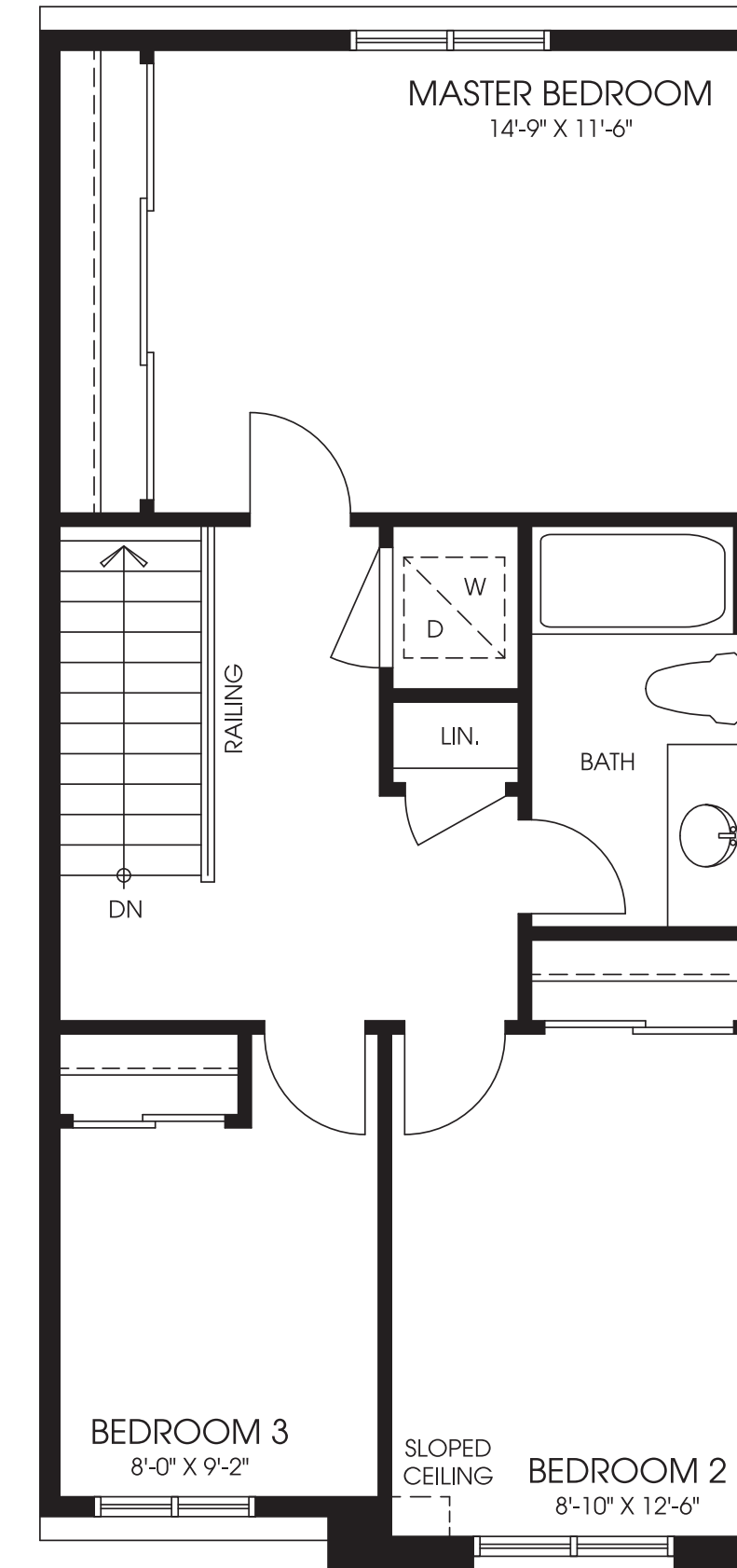
LOWER FLOOR  
ELEV. 'A-2'



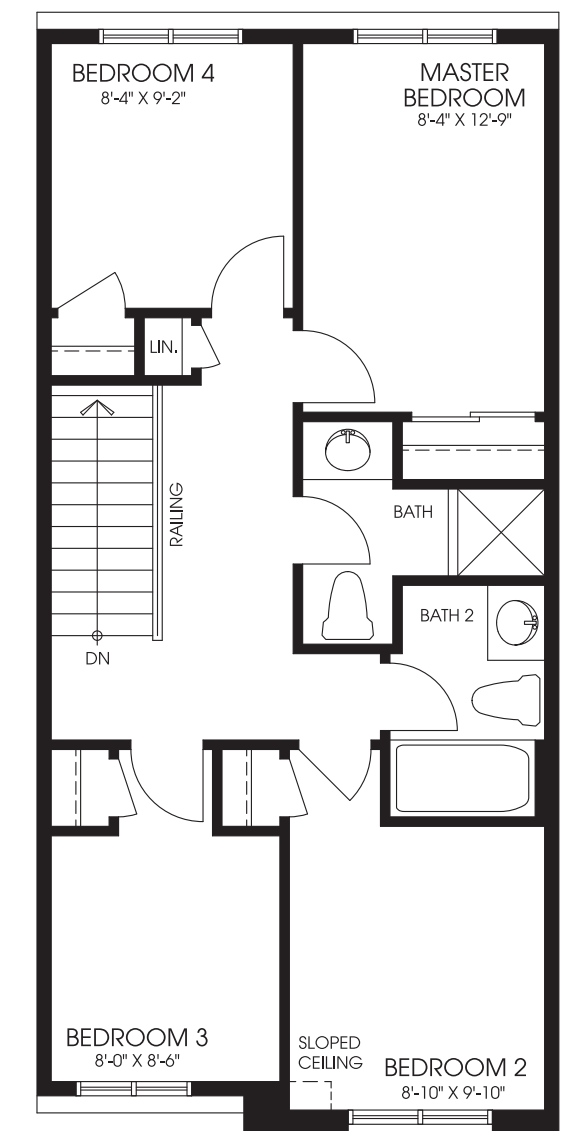
MAIN FLOOR  
ELEV. 'A-2'



ALT. MAIN FLOOR  
ELEV. 'A-2'



2ND FLOOR  
ELEV. 'A-2'



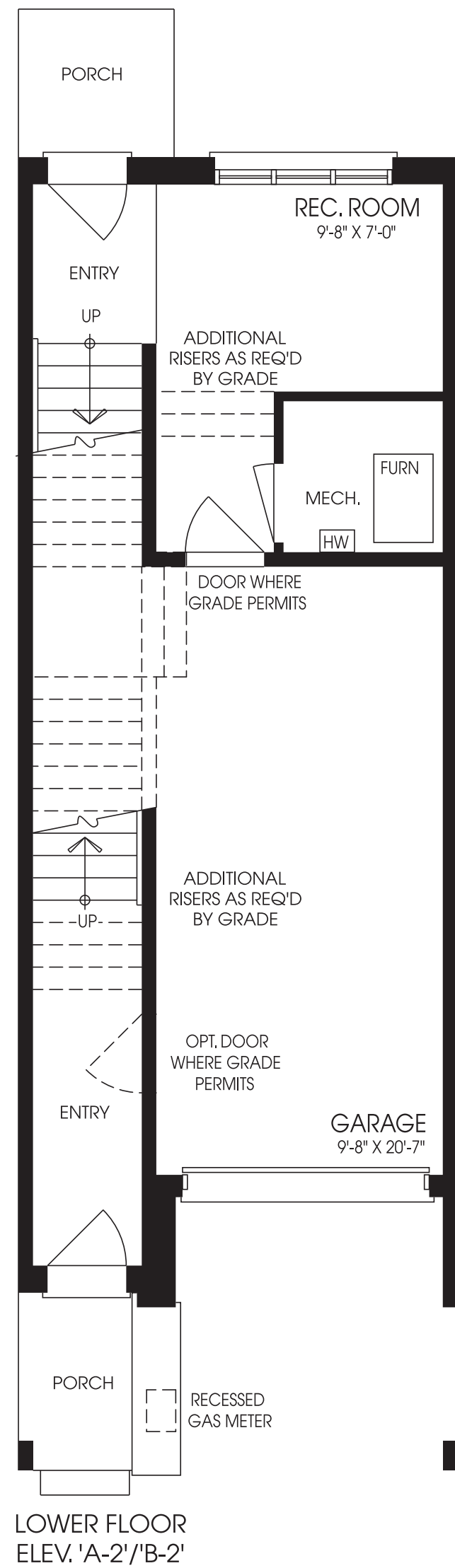
OPT. 2ND FLOOR  
ELEV. 'A-2'  
4 BEDROOM



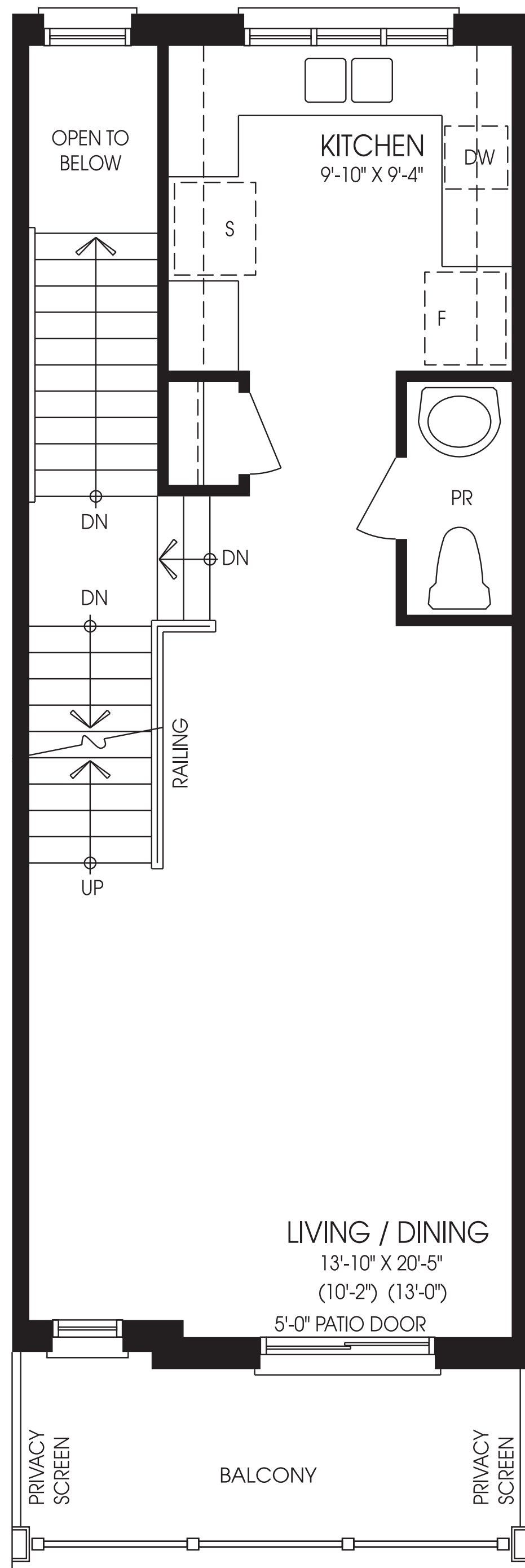
**bedford**

ELEVATION A-1 / 1,855 SQ. FT. // ELEVATION A-2 / 1,810 SQ. FT.  
 ELEVATION B-1 / 1,855 SQ. FT. // ELEVATION B-2 / 1,802 SQ. FT.

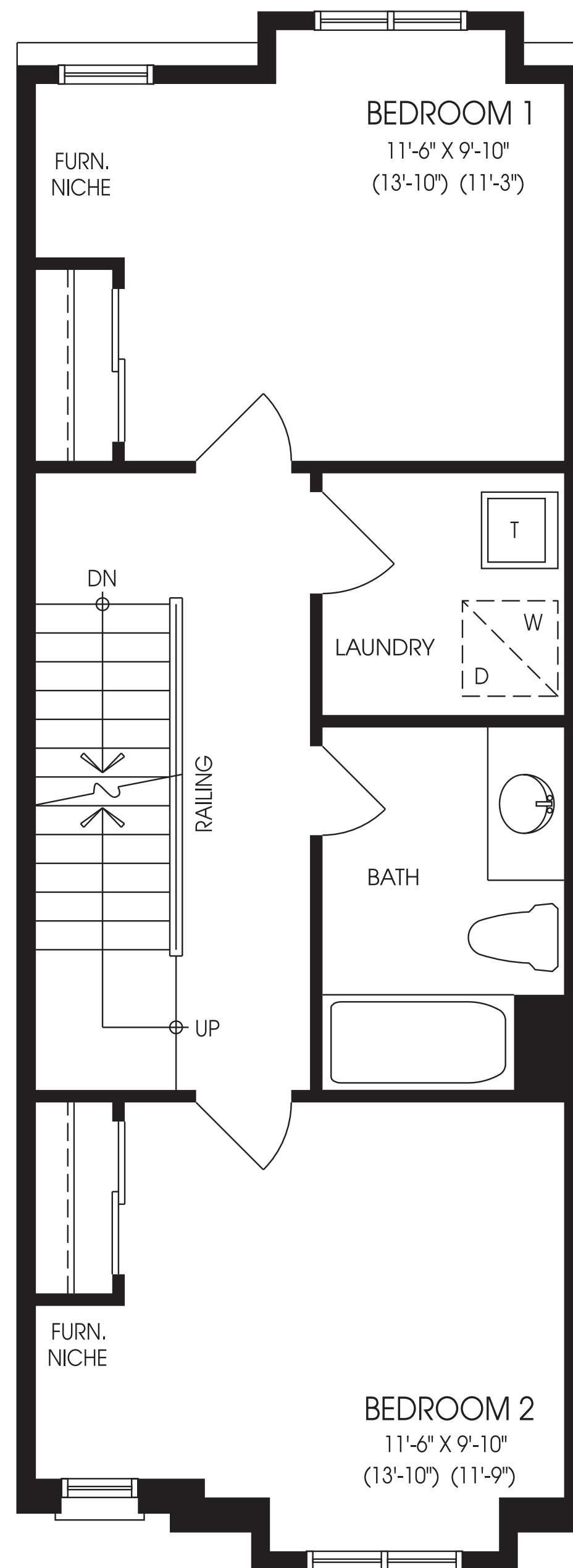
Materials, specifications and floor plans are subject to change without notice. All house renderings are artist's conceptions. All floor plans are approximate dimensions. Actual usable floor space may vary from the stated floor area. E. & O.E. T-13



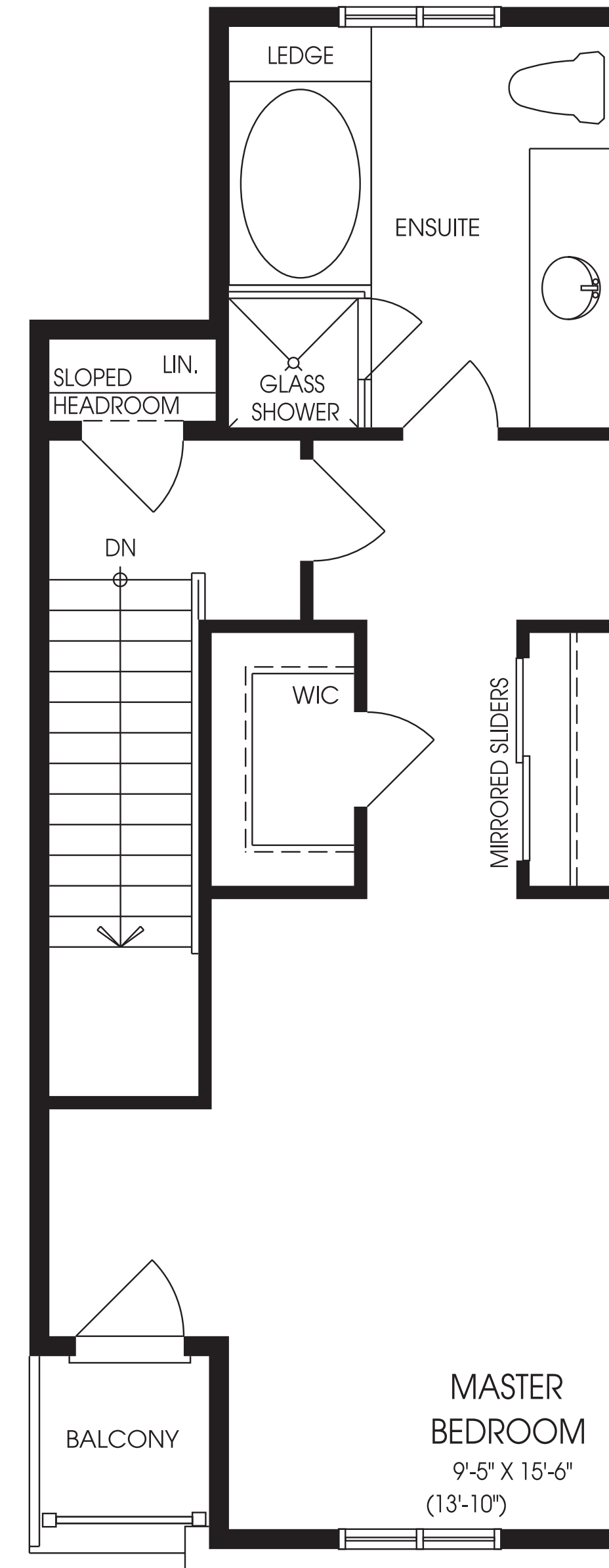
LOWER FLOOR  
ELEV. 'A-2'/'B-2'



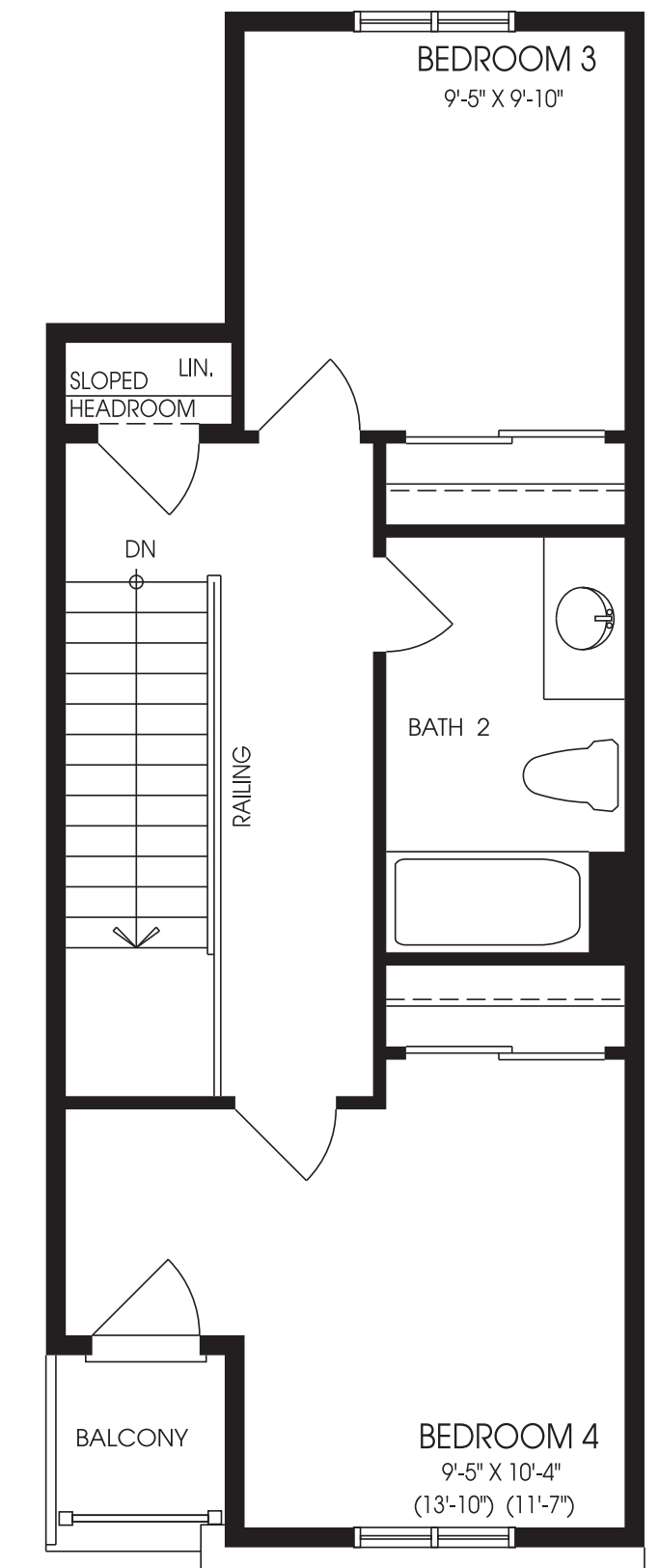
MAIN FLOOR  
ELEV. 'A-2'/'B-2'



2ND FLOOR  
ELEV. 'A-2'/'B-2'



3RD FLOOR  
ELEV. 'A-2'/'B-2'



OPT. 3RD FLOOR  
ELEV. 'A-2'/'B-2'



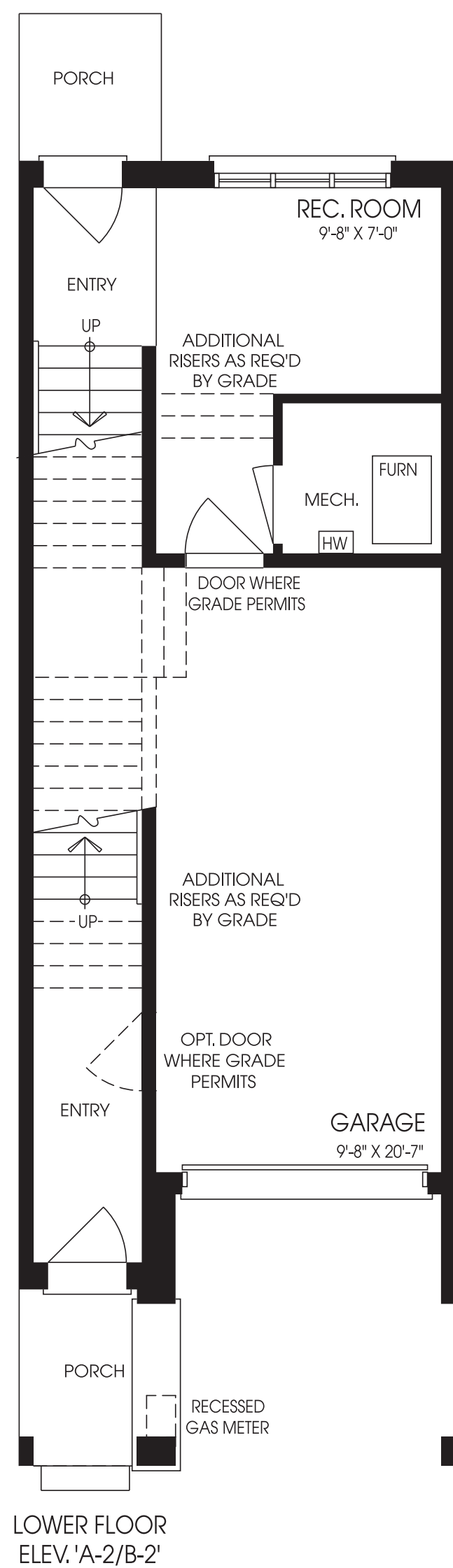
**ZIA ABBAS**  
[www.CondoOnly.com](http://www.CondoOnly.com)  
[www.WorldClassRealtyPoint.com](http://www.WorldClassRealtyPoint.com)  
**(416) 666-4545**



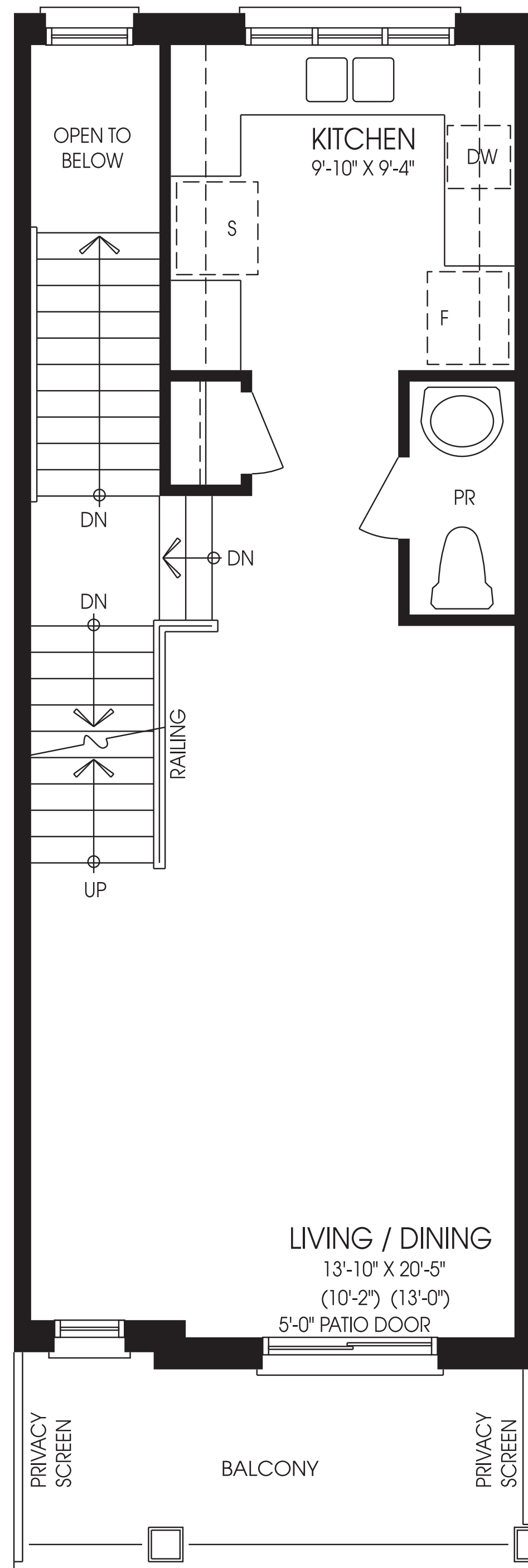
**fairfax**

ELEVATION B-1 / 1,952 SQ. FT. // ELEVATION B-2 / 1,861 SQ. FT.  
 ELEVATION B-3 / 1,864 SQ. FT. // ELEVATION B-4 / 1,912 SQ. FT.

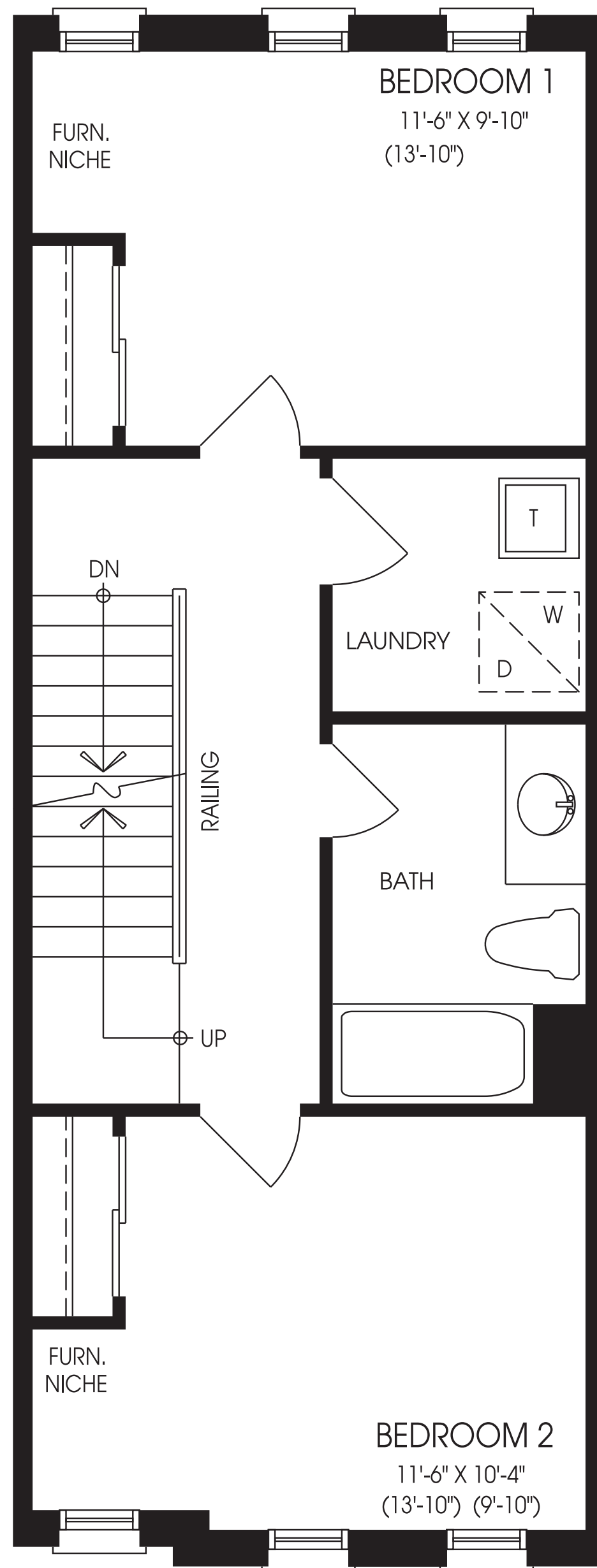
Materials, specifications and floor plans are subject to change without notice. All house renderings are artist's conceptions. All floor plans are approximate dimensions. Actual usable floor space may vary from the stated floor area. E. & O.E. T-1



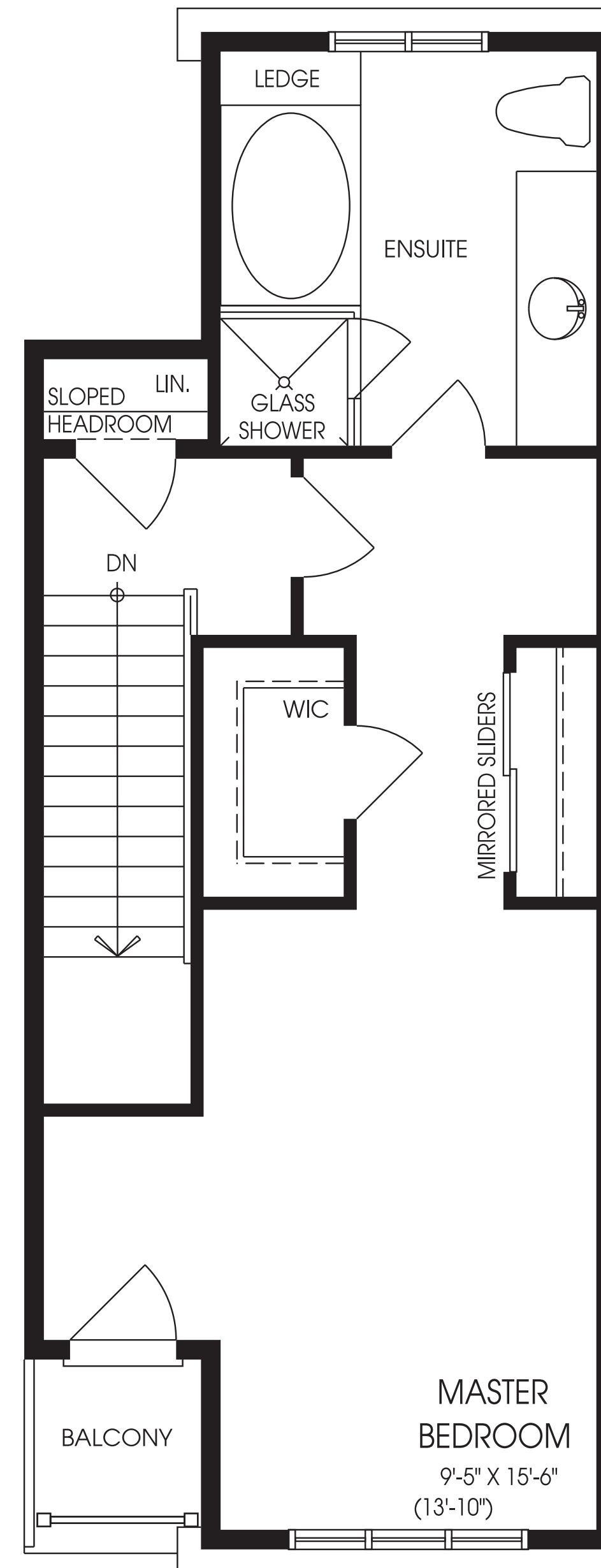
LOWER FLOOR  
ELEV. 'A-2/B-2'



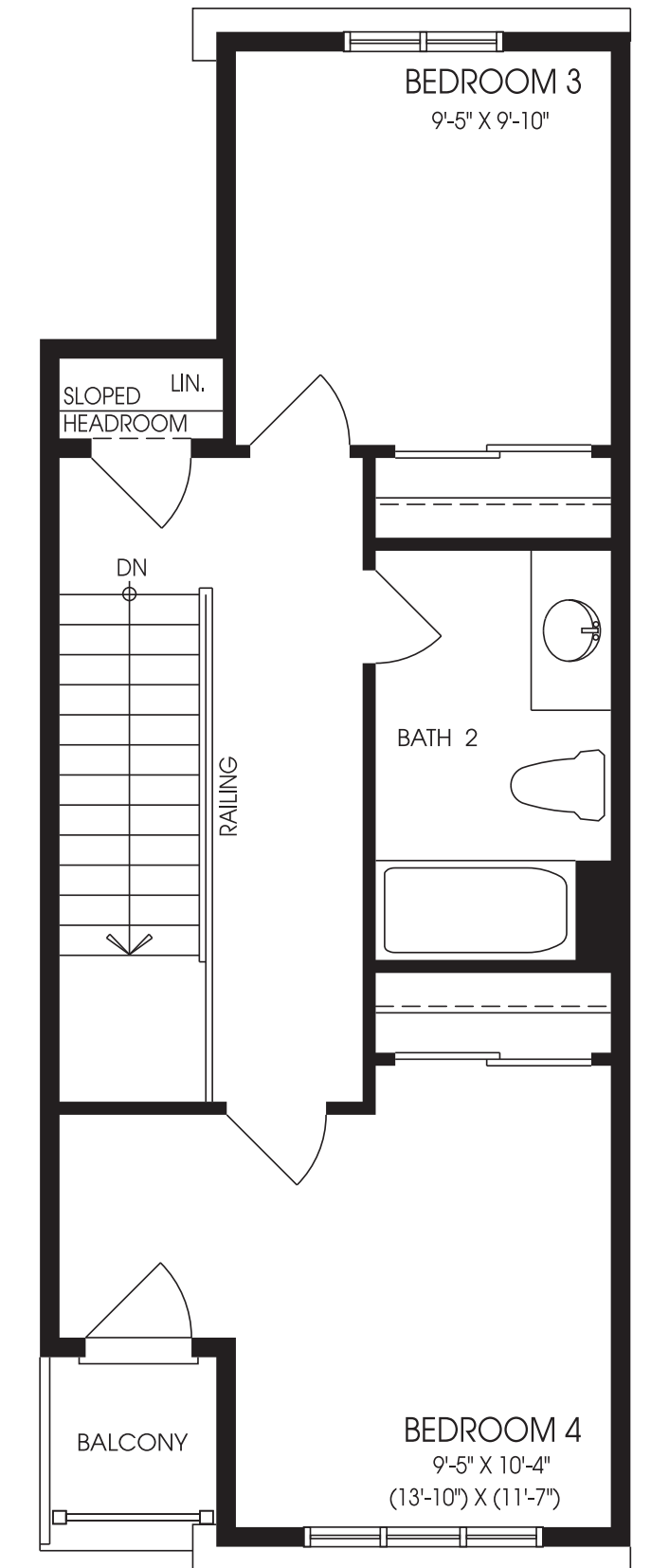
MAIN FLOOR  
ELEV. 'A-2/B-2'



2ND FLOOR  
ELEV. 'A-2/B-2'



3RD FLOOR  
ELEV. 'A-2/B-2'



OPT. 3RD FLOOR  
ELEV. 'A-2/B-2'



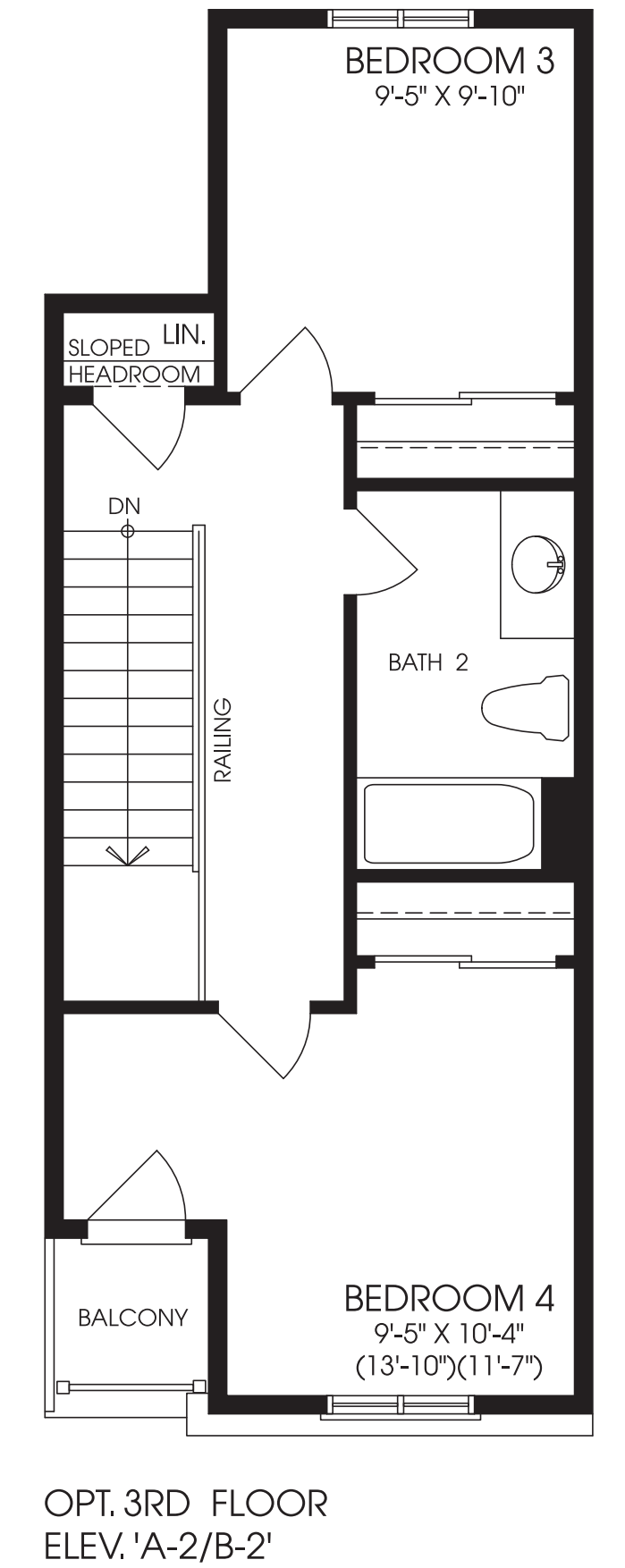
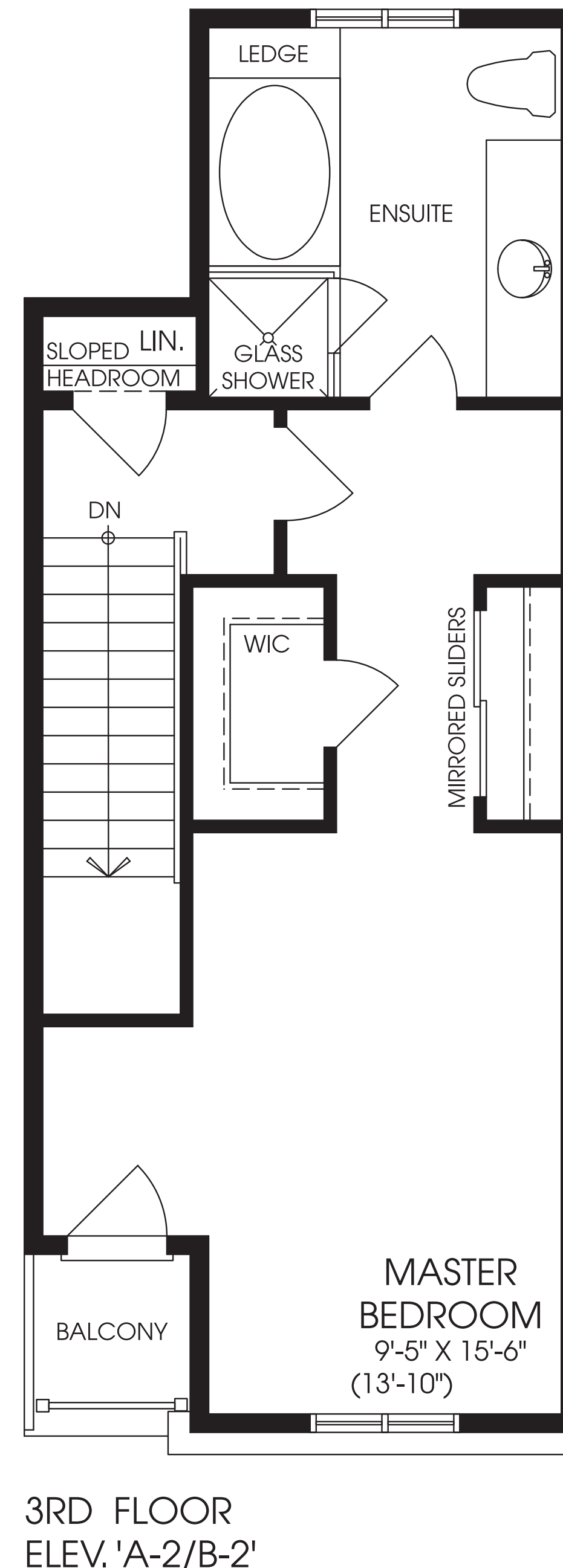
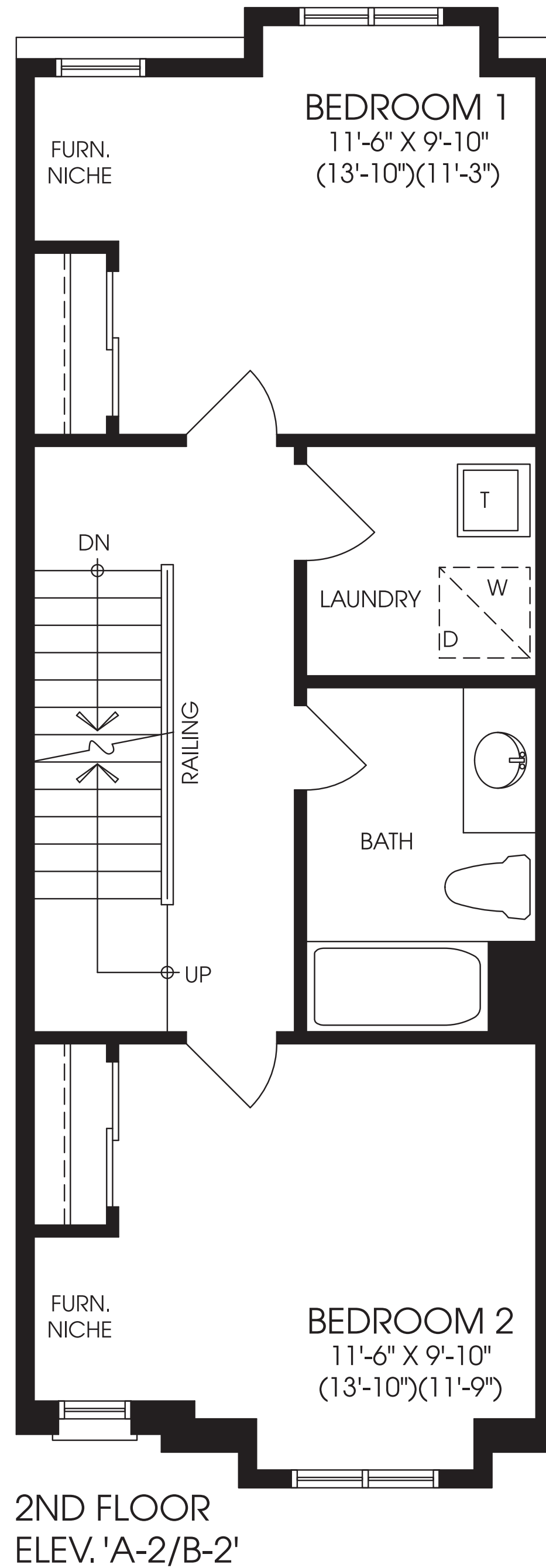
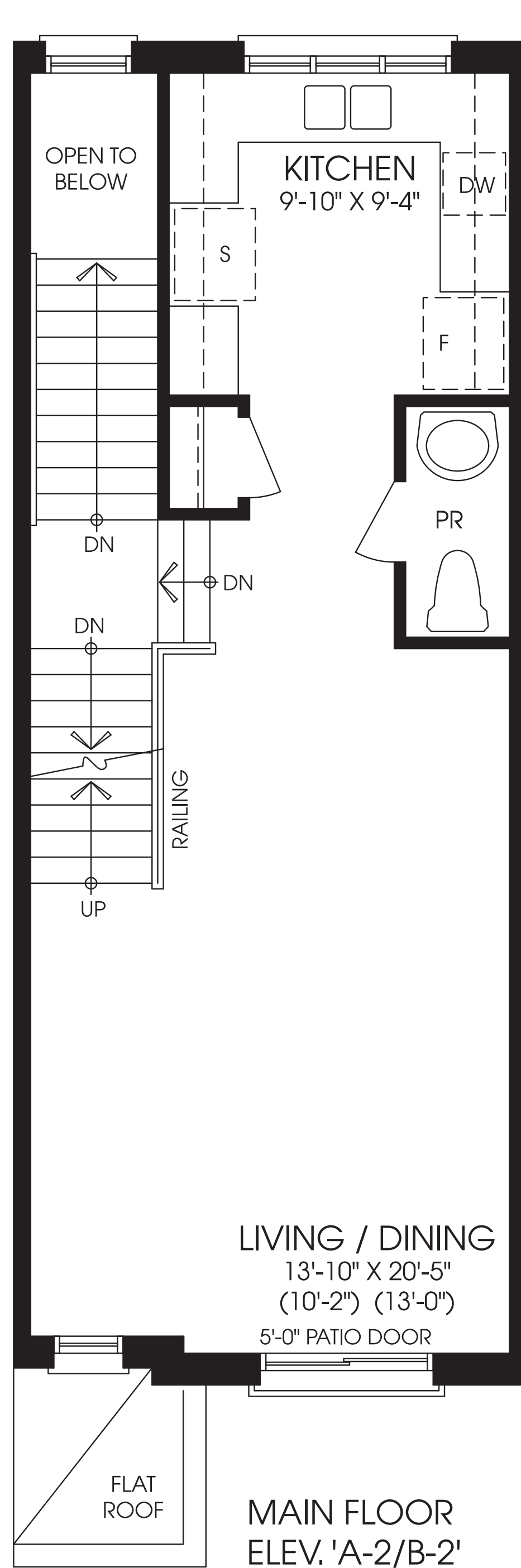
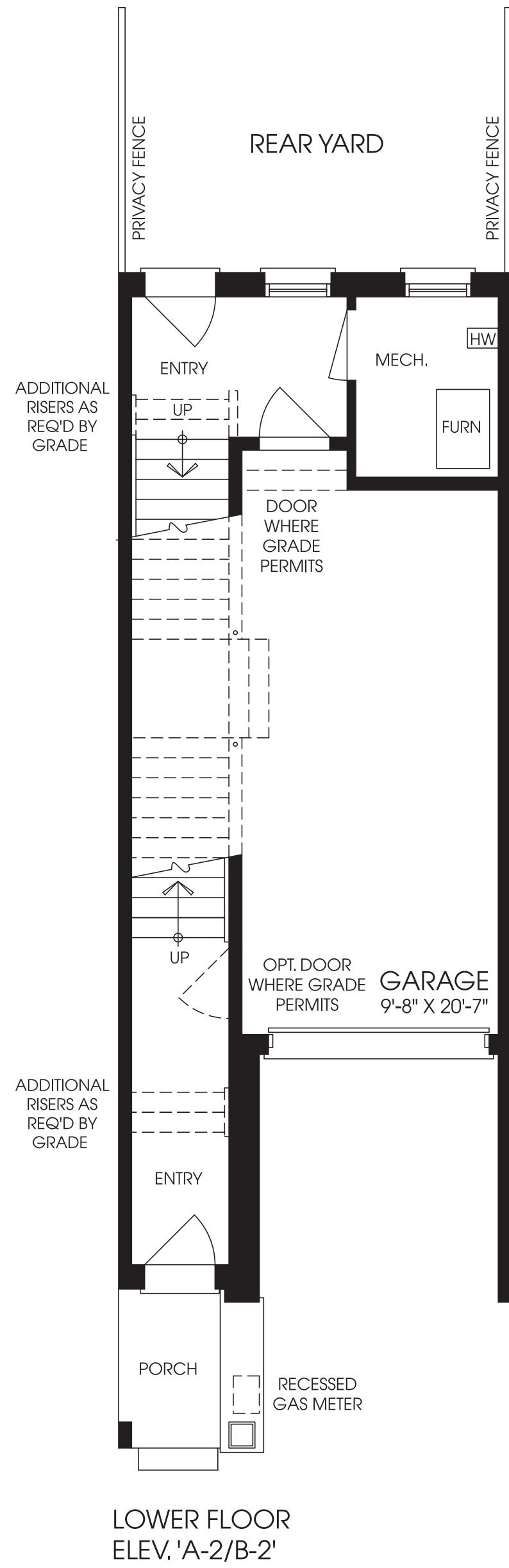
**ZIA ABBAS**  
[www.CondoOnly.com](http://www.CondoOnly.com)  
[www.WorldClassRealtyPoint.com](http://www.WorldClassRealtyPoint.com)  
**(416) 666-4545**



**croft**

ELEVATION A-1 / 1,977 SQ. FT. // ELEVATION A-2 / 1,853 SQ. FT.  
 ELEVATION A-3 / 1,883 SQ. FT. // ELEVATION A-4 / 1,918 SQ. FT.

Materials, specifications and floor plans are subject to change without notice. All house renderings are artist's conceptions. All floor plans are approximate dimensions. Actual usable floor space may vary from the stated floor area. E. & O.E. T-2



ZIA ABBAS

www.CondoOnly.com

www.WorldClassRealtyPoint.com

(416) 666-4545

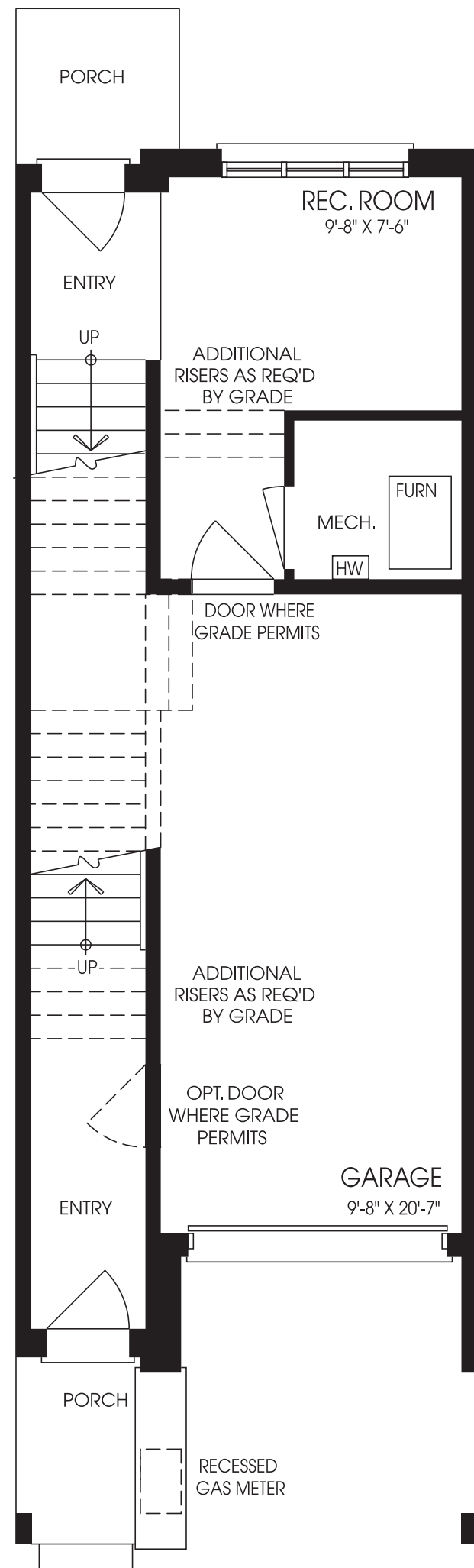


clinton

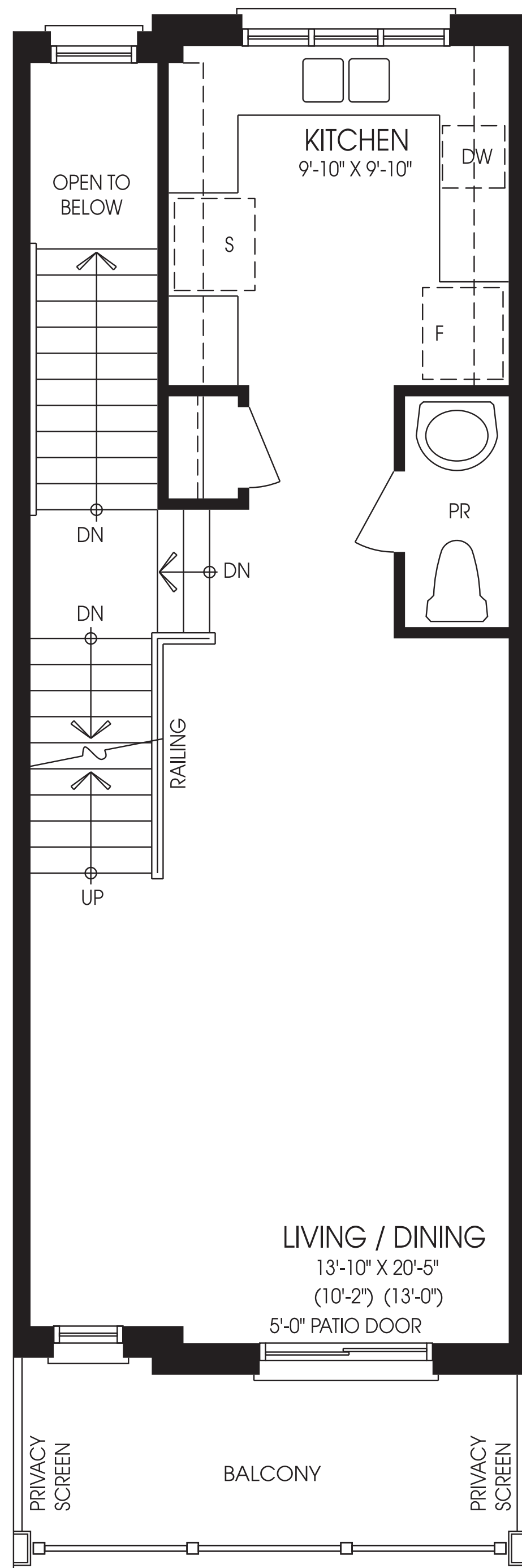
ELEVATION A-1 / 1,868 SQ. FT. // ELEVATION A-2 / 1,782 SQ. FT.  
 ELEVATION A-3 / 1,785 SQ. FT. // ELEVATION A-4 / 1,827 SQ. FT.

Materials, specifications and floor plans are subject to change without notice. All house renderings are artist's conceptions. All floor plans are approximate dimensions. Actual usable floor space may vary from the stated floor area, E. & O.E. T-9

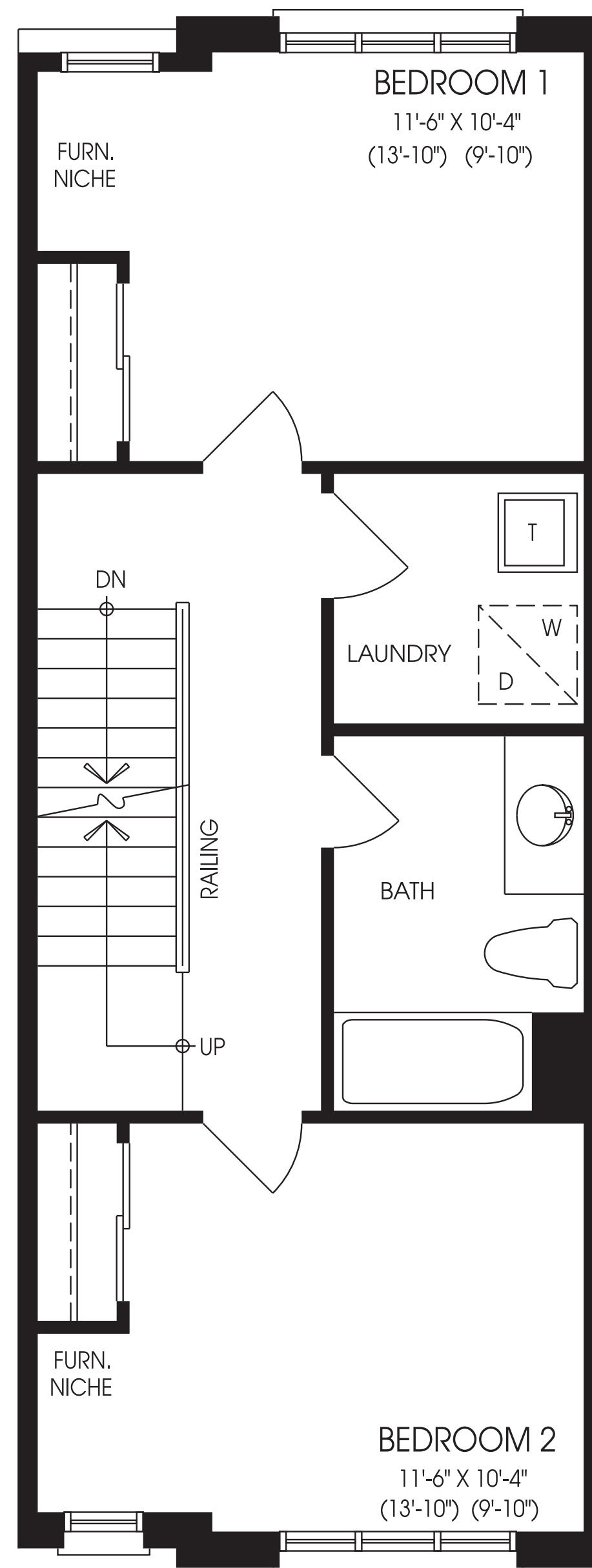




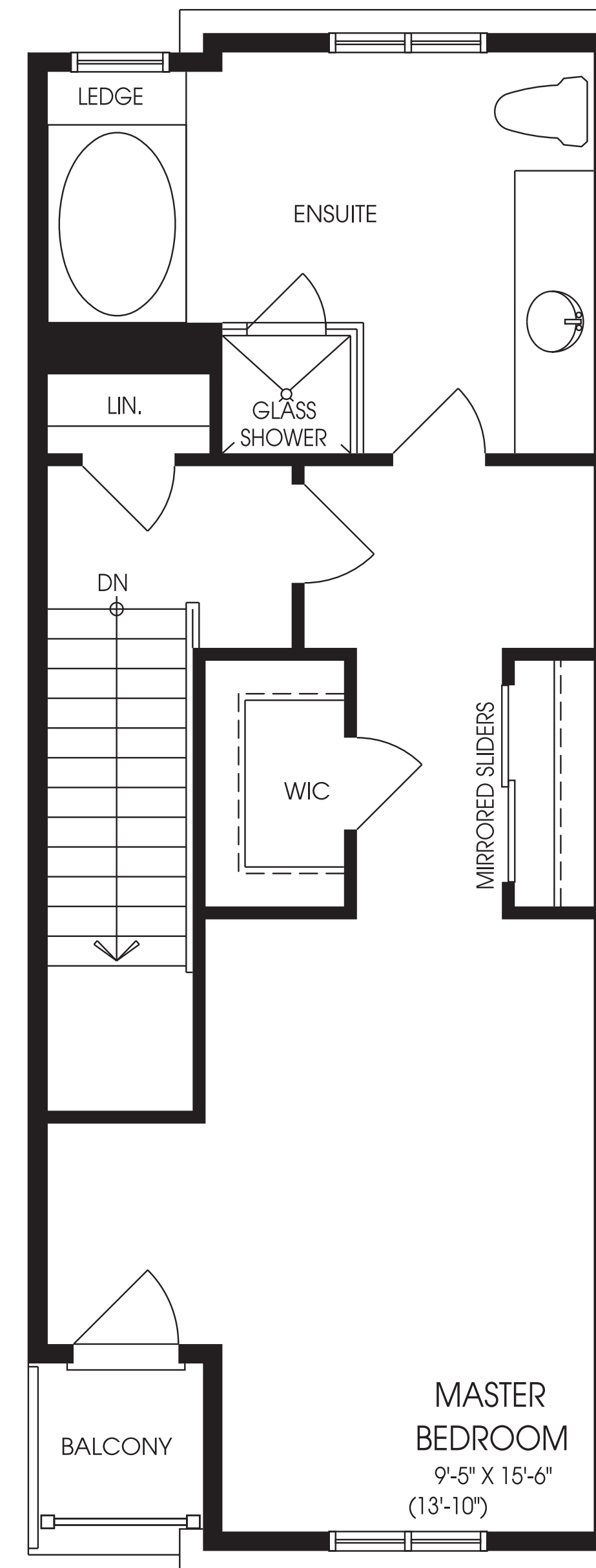
LOWER FLOOR  
ELEV. 'A-2/B-2'



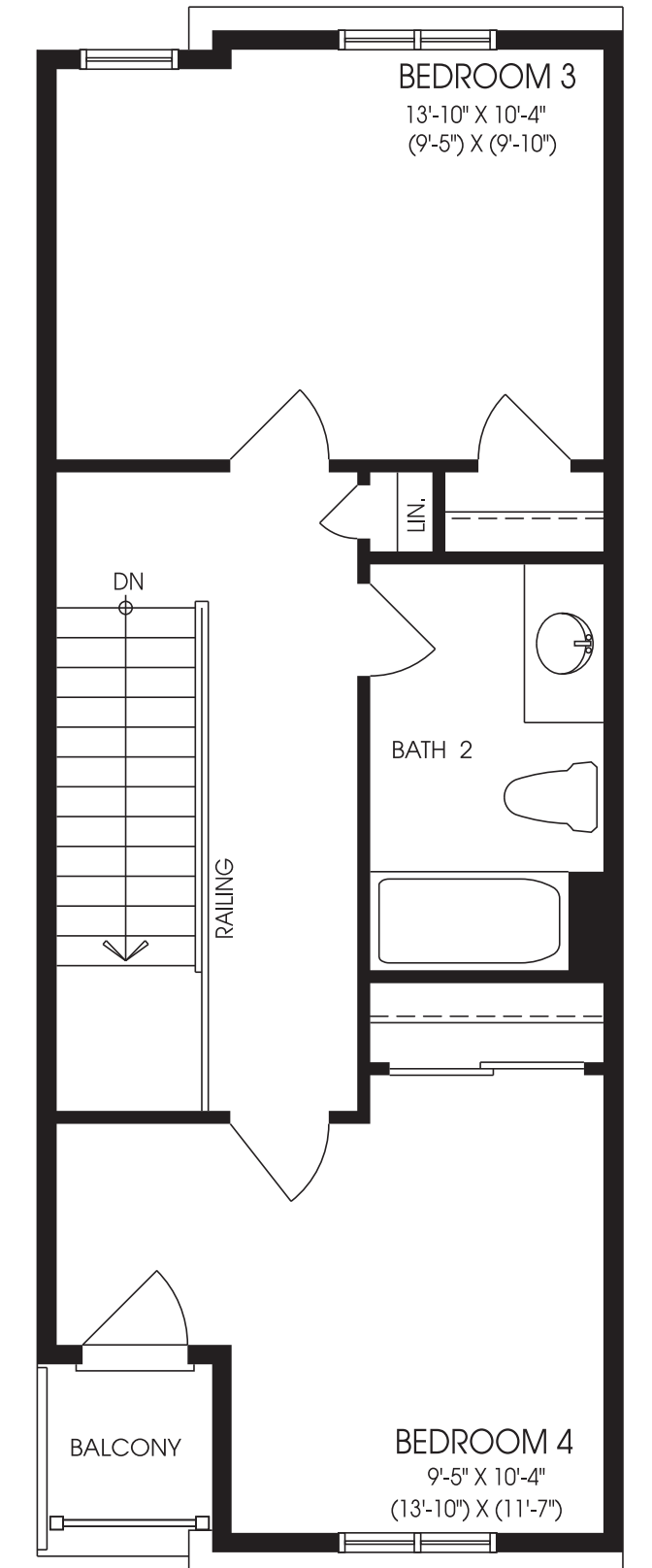
MAIN FLOOR  
ELEV. 'A-2/B-2'



2ND FLOOR  
ELEV. 'A-2/B-2'



3RD FLOOR  
ELEV. 'A-2/B-2'



OPT. 3RD FLOOR  
ELEV. 'A-2/B-2'



**ZIA ABBAS**  
[www.CondoOnly.com](http://www.CondoOnly.com)  
[www.WorldClassRealtyPoint.com](http://www.WorldClassRealtyPoint.com)  
**(416) 666-4545**

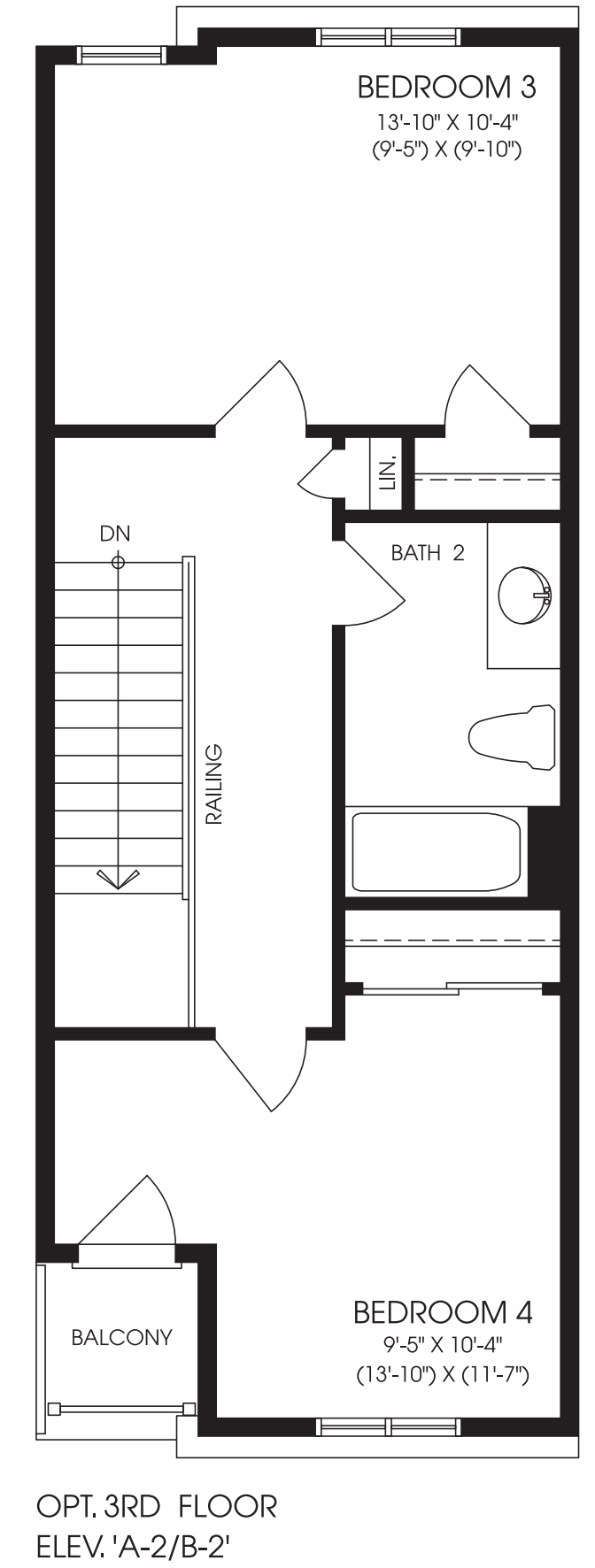
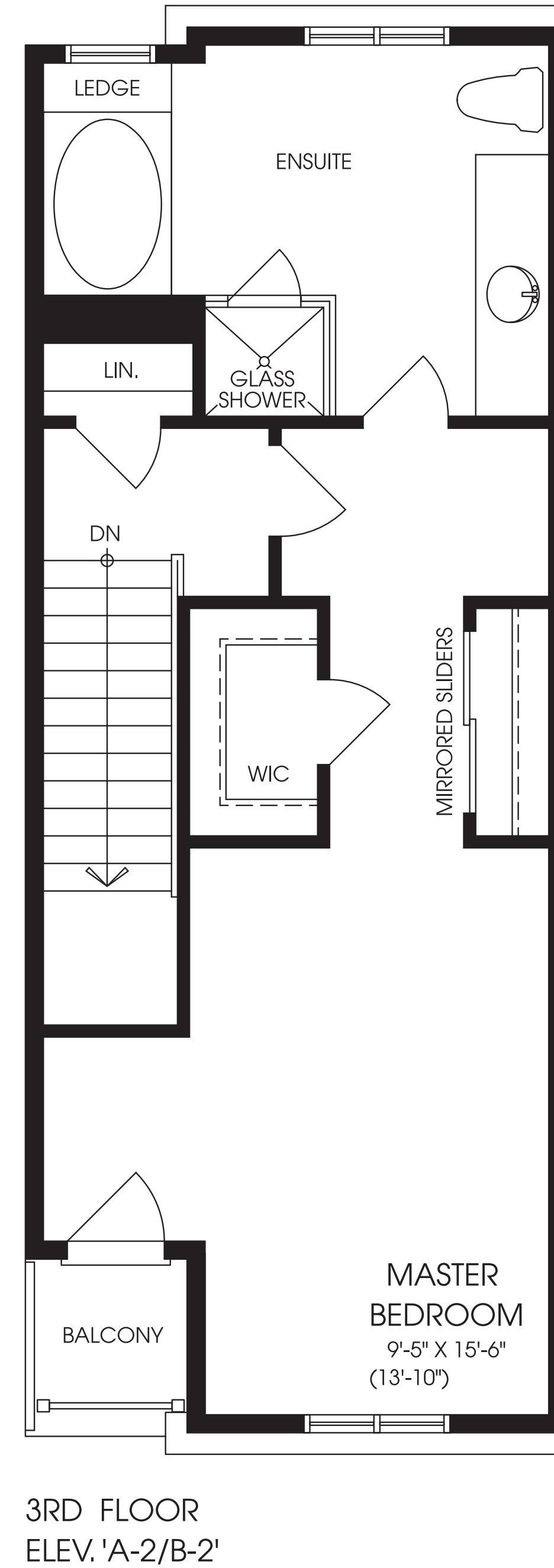
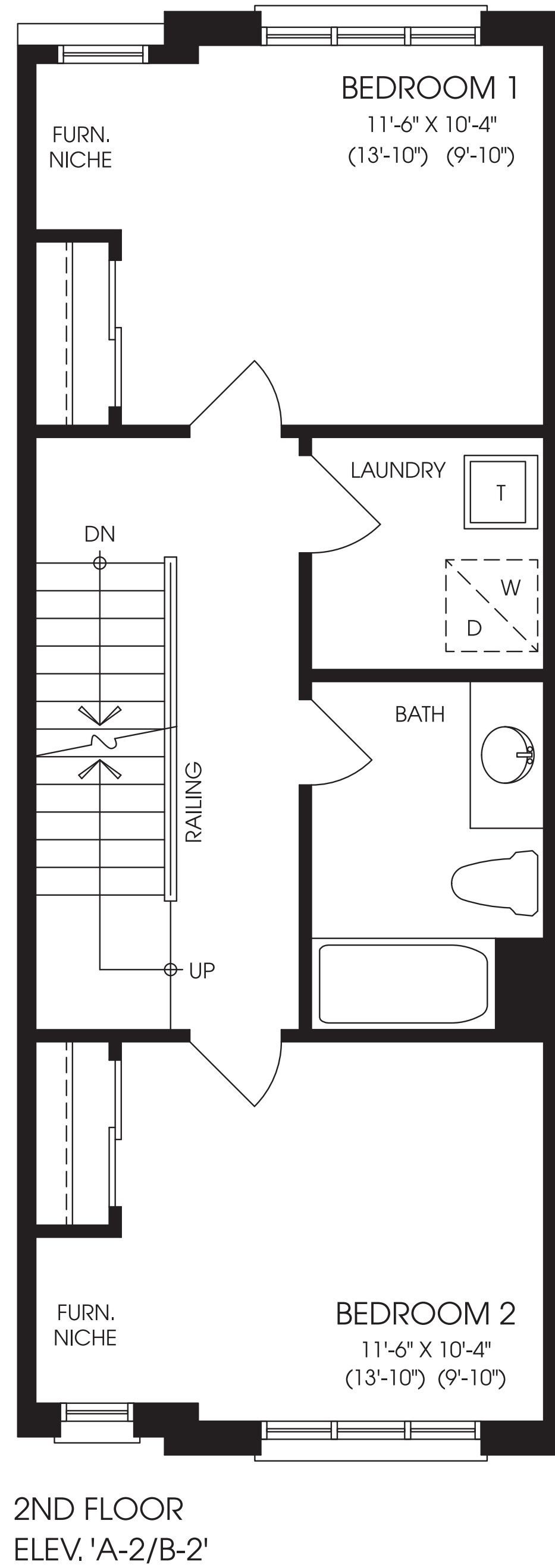
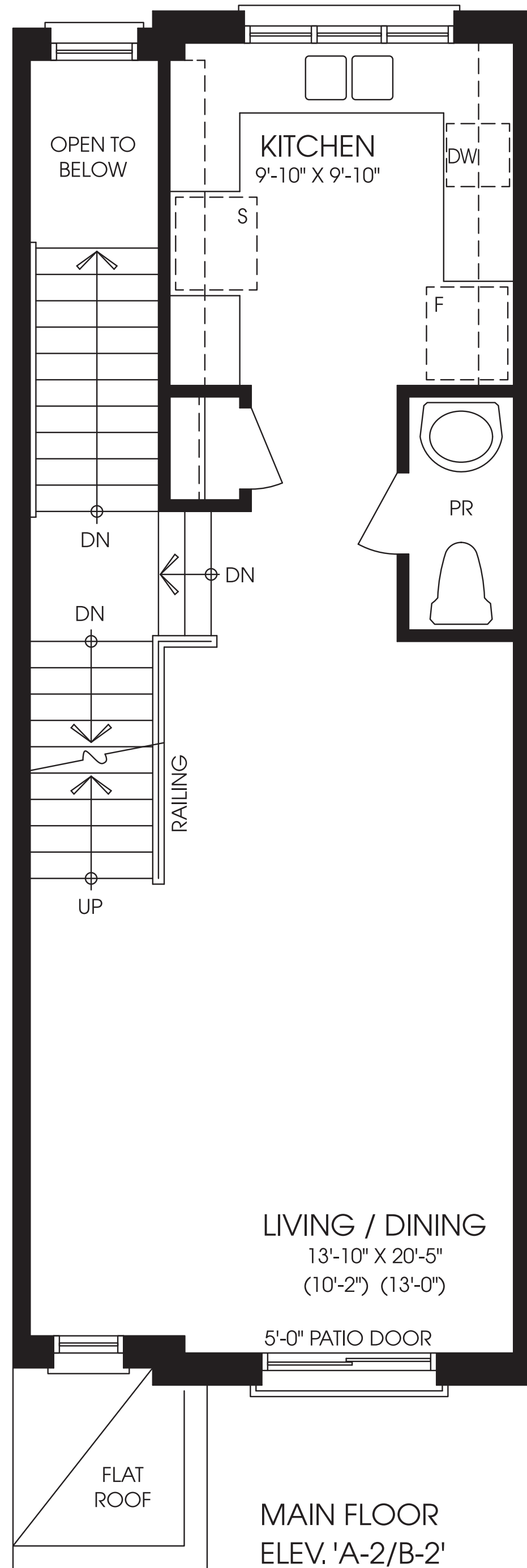
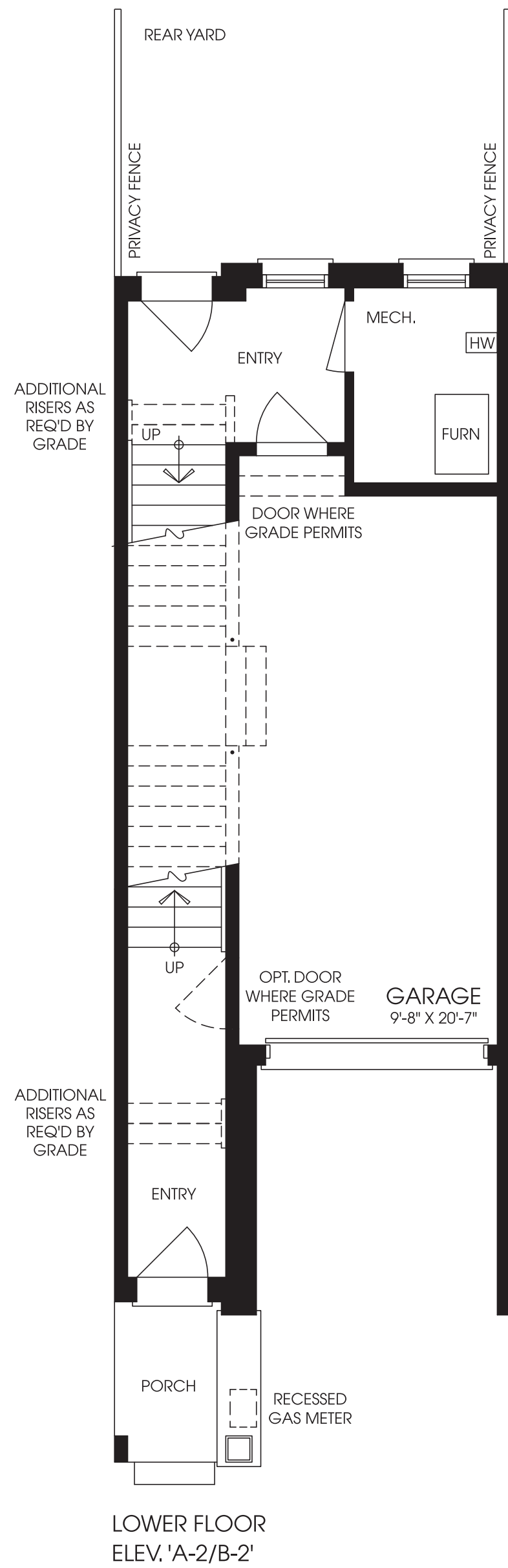


**sullivan**

ELEVATION B-1 / 1,986 SQ. FT. // ELEVATION B-2 / 1,909 SQ. FT.  
 ELEVATION B-3 / 1,946 SQ. FT.

Materials, specifications and floor plans are subject to change without notice. All house renderings are artist's conceptions. All floor plans are approximate dimensions. Actual usable floor space may vary from the stated floor area. E. & O.E. T-3





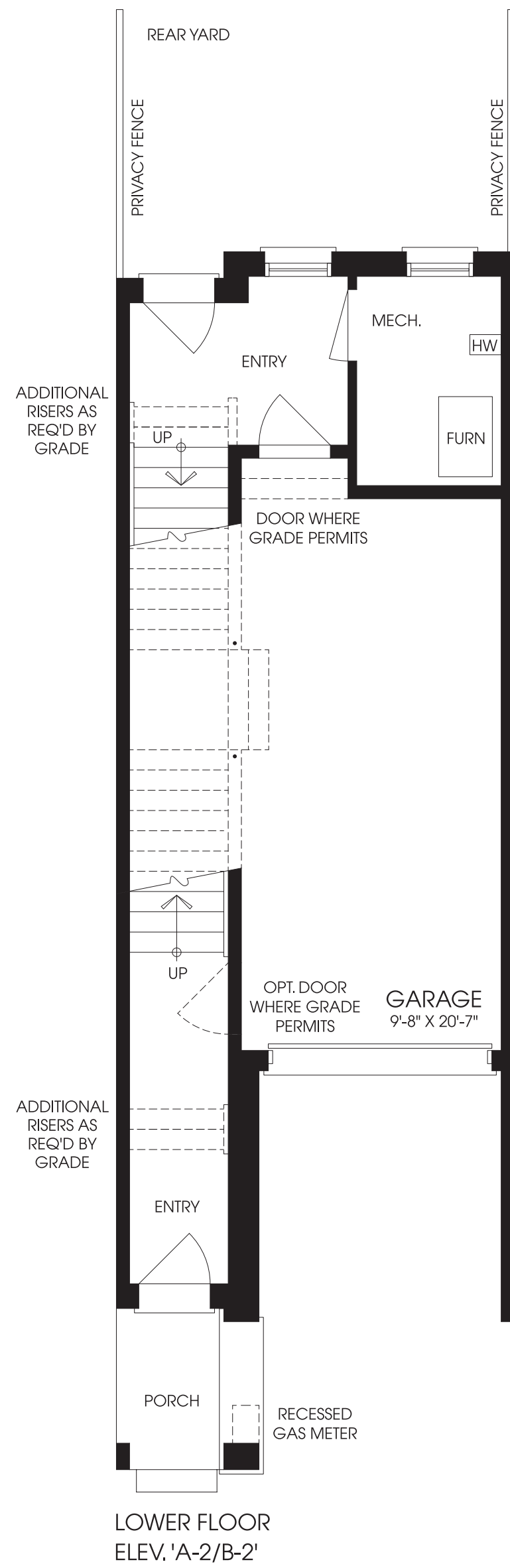
**ZIA ABBAS**  
[www.CondoOnly.com](http://www.CondoOnly.com)  
[www.WorldClassRealtyPoint.com](http://www.WorldClassRealtyPoint.com)  
**(416) 666-4545**



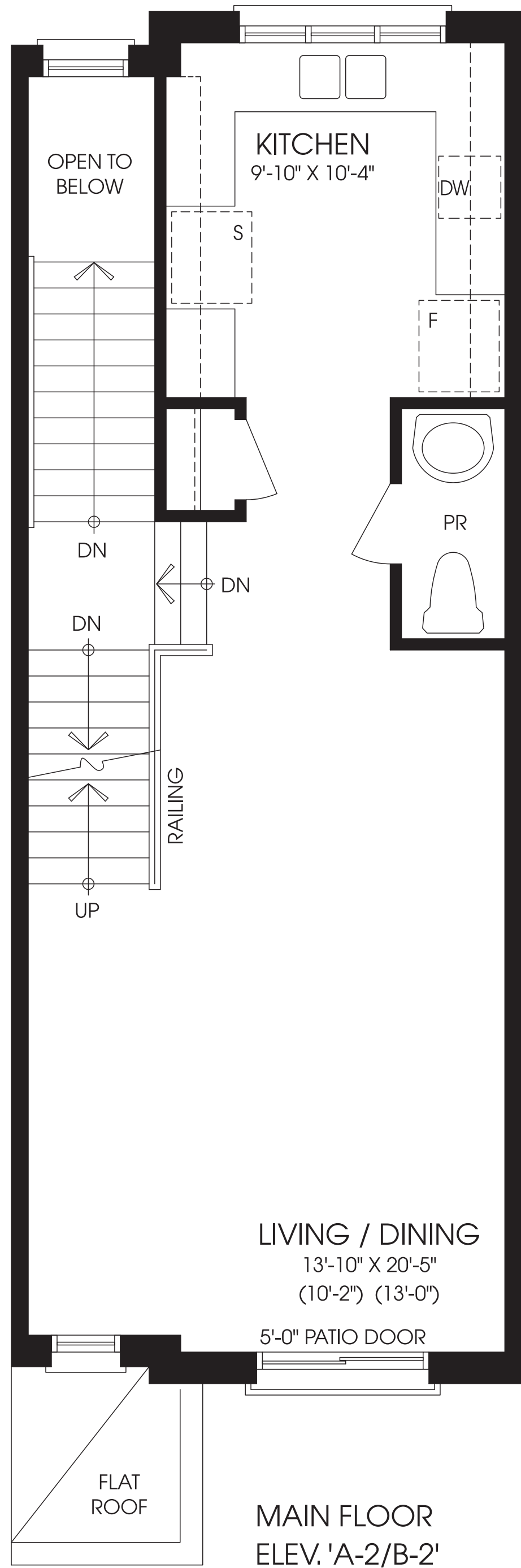
**merc**  
 ELEVATION A-1 / 1,902 SQ. FT. // ELEVATION A-2 / 1,827 SQ. FT.  
 ELEVATION A-3 / 1,861 SQ. FT.

Materials, specifications and floor plans are subject to change without notice. All house renderings are artist's conceptions. All floor plans are approximate dimensions. Actual usable floor space may vary from the stated floor area. E. & O.E. T-11

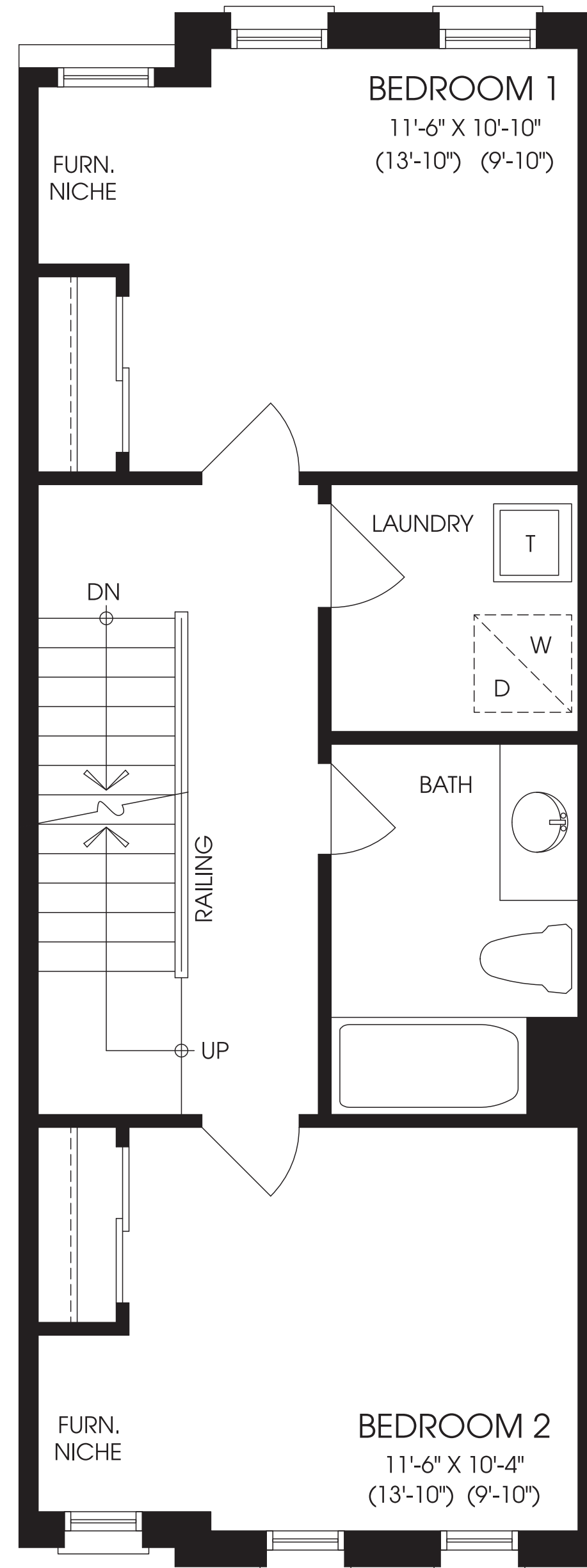




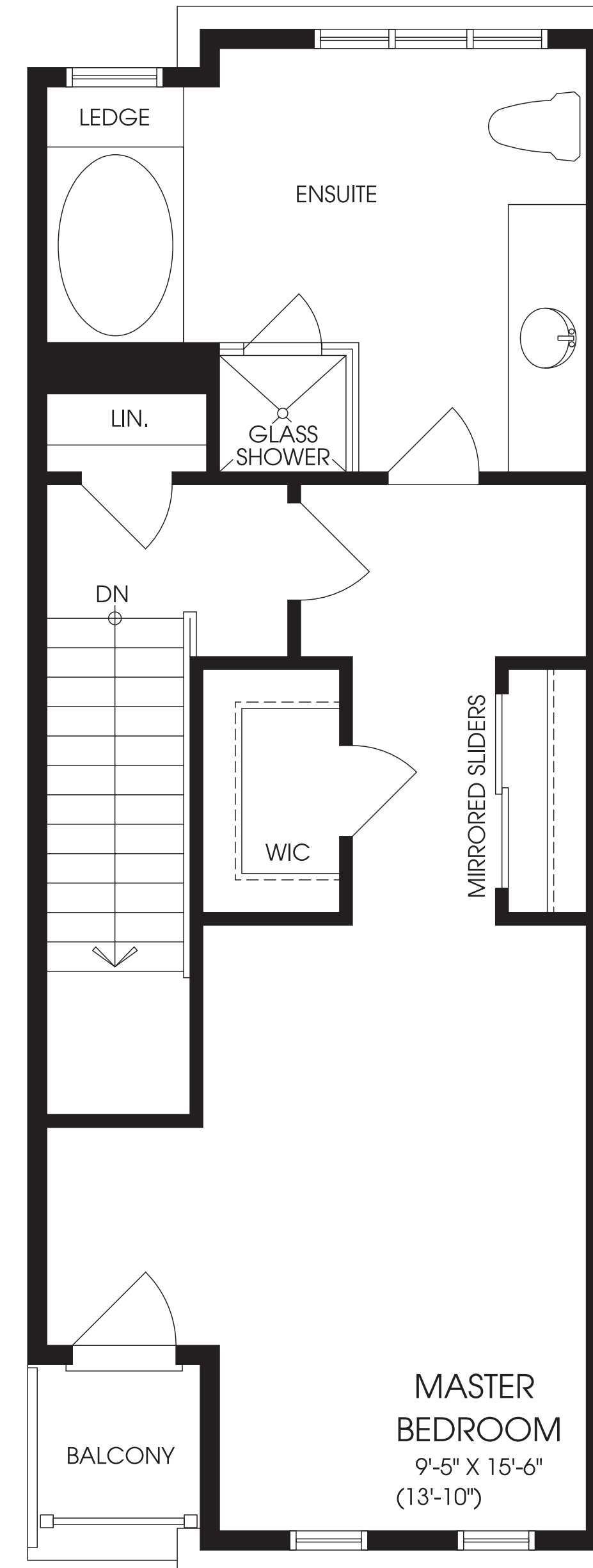
LOWER FLOOR  
ELEV. 'A-2/B-2'



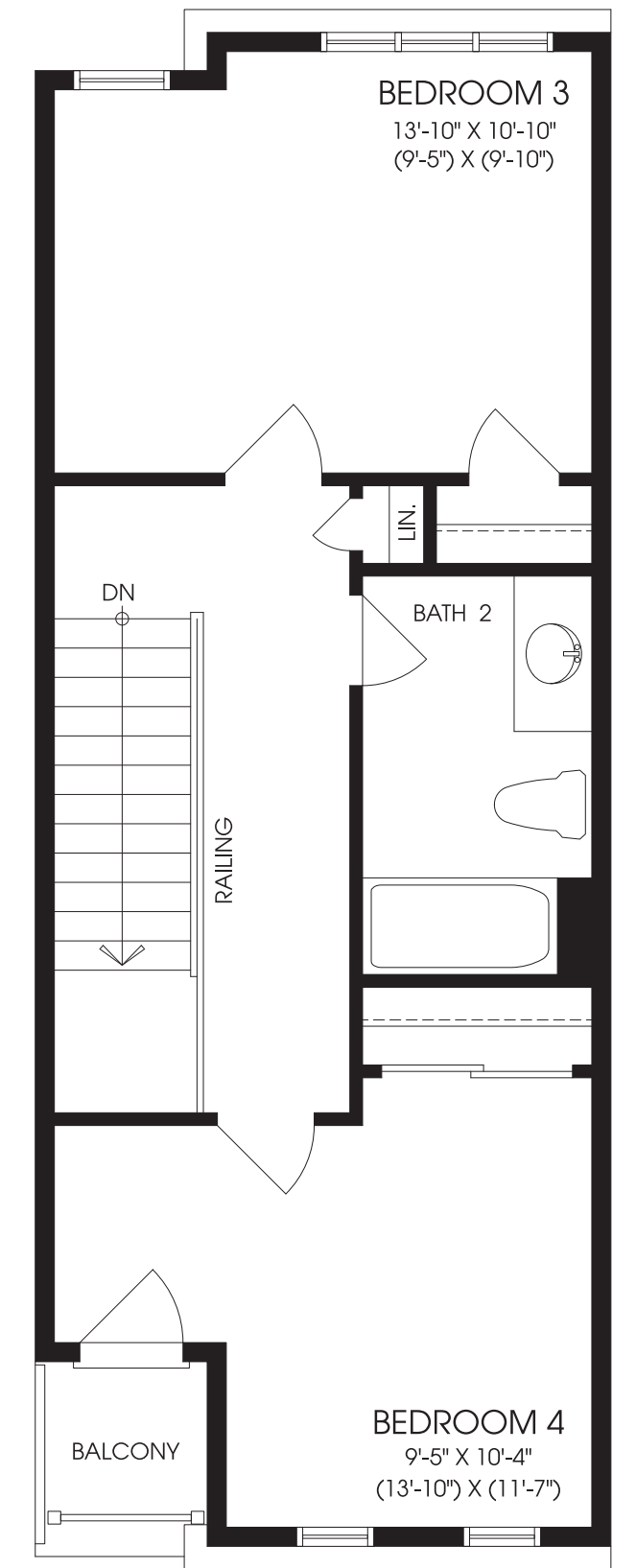
MAIN FLOOR  
ELEV. 'A-2/B-2'



2ND FLOOR  
ELEV. 'A-2/B-2'



3RD FLOOR  
ELEV. 'A-2/B-2'



OPT. 3RD FLOOR  
ELEV. 'A-2/B-2'

**ZIA ABBAS**  
www.CondoOnly.com  
www.WorldClassRealtyPoint.com  
**(416) 666-4545**



**thompson**

ELEVATION B-1 / 1,902 SQ. FT. // ELEVATION B-2 / 1,844 SQ. FT.  
ELEVATION B-3 / 1,861 SQ. FT.

Materials, specifications and floor plans are subject to change without notice. All house renderings are artist's conceptions. All floor plans are approximate dimensions. Actual usable floor space may vary from the stated floor area. E. & O.E. T-12