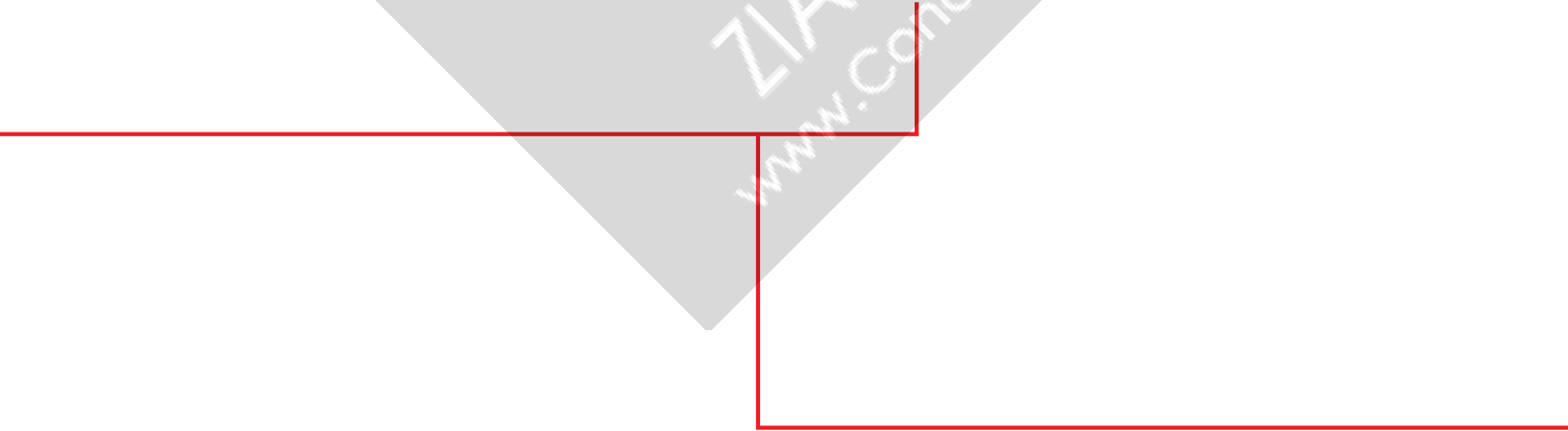
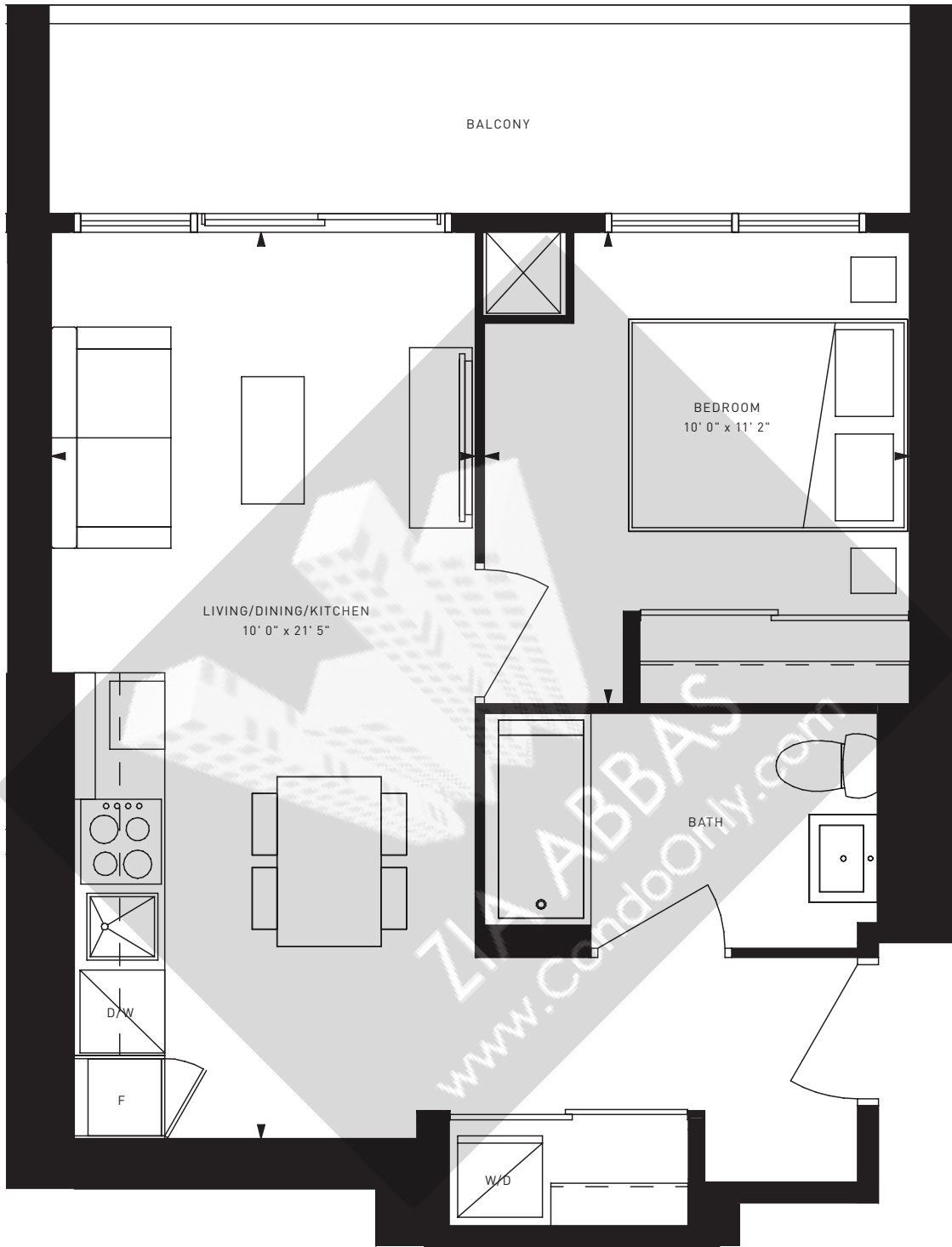


TR^NSIT CITY



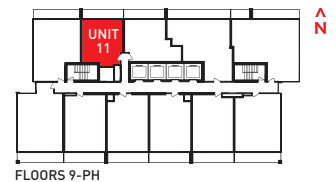


## TC608

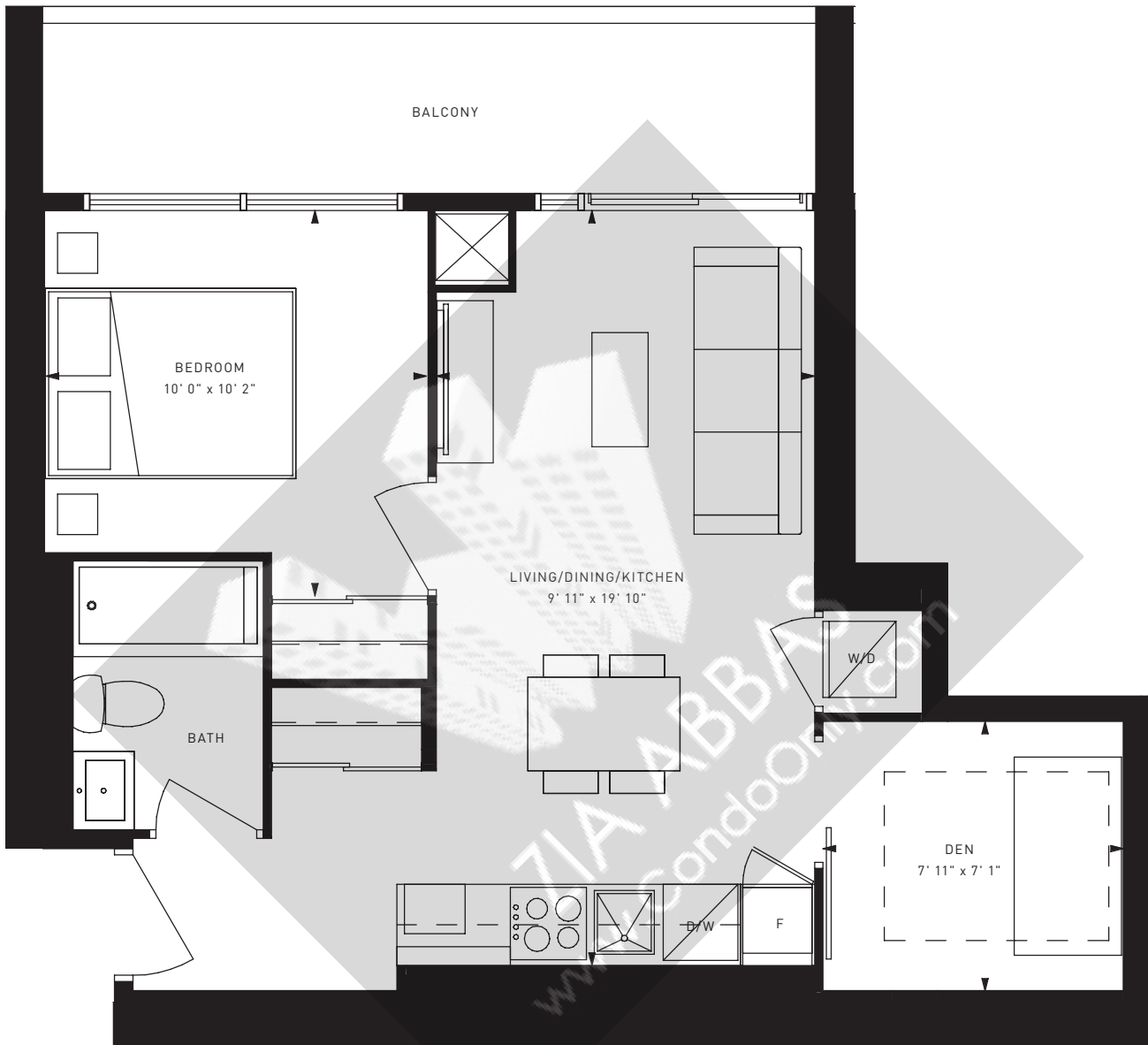
1 BED

INTERIOR: 503 S.F.

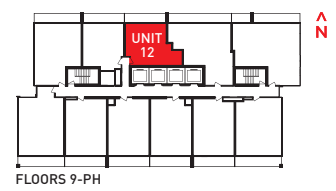
EXTERIOR: 105 S.F.



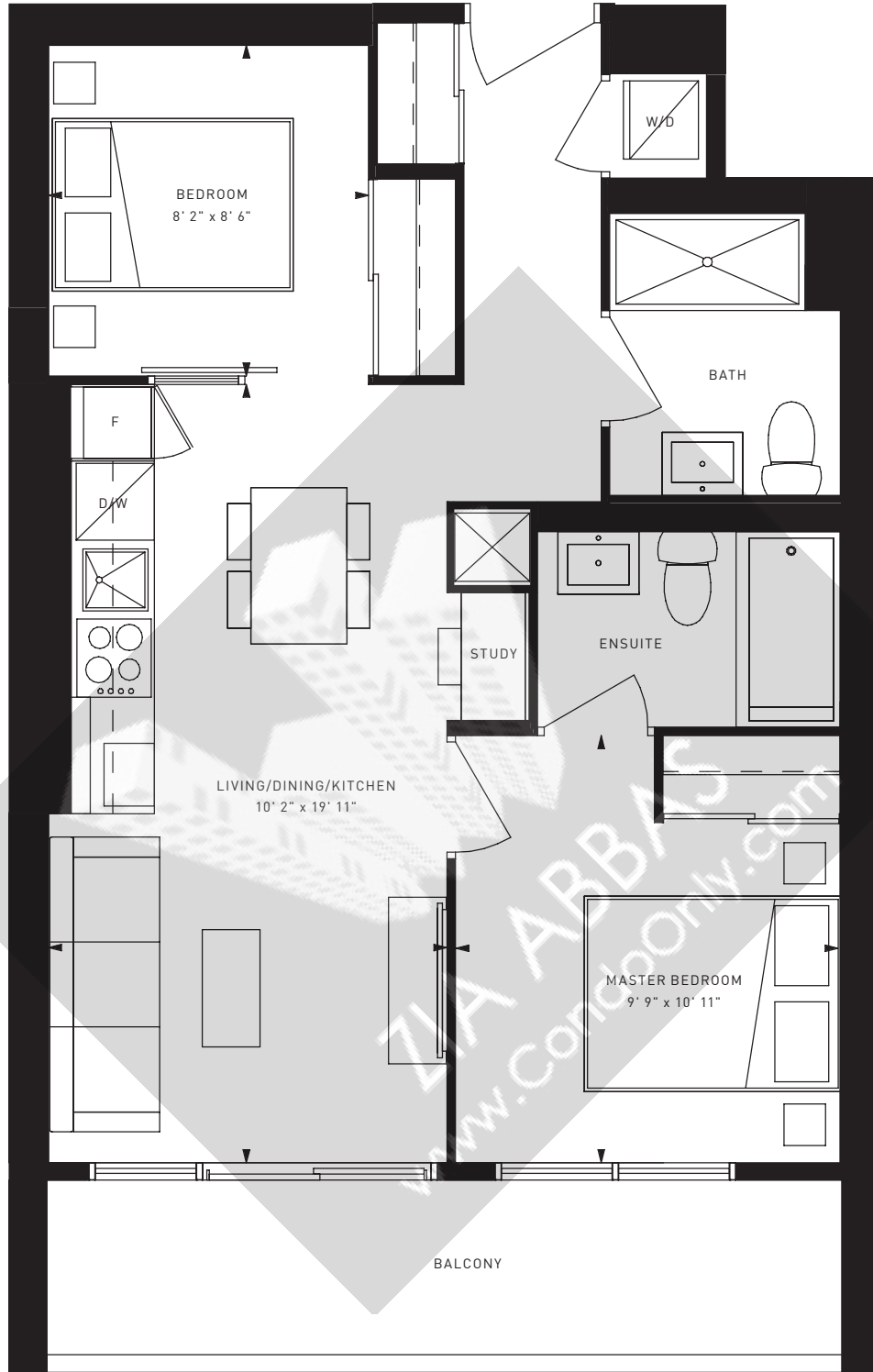
Balconies are exclusive use common elements, and the location and size may be subject to change without notice, including but not restricted to changes or variations between suites in exterior architectural conditions (dividers, metal paneling, shear walls, etc).



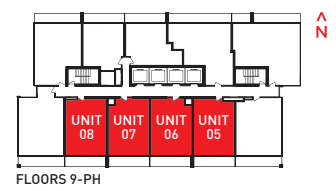
**TC658**  
 1 BED + DEN  
 INTERIOR: 553 S.F.  
 EXTERIOR: 105 S.F.



Balconies are exclusive use common elements, and the location and size may be subject to change without notice, including but not restricted to changes or variations between suites in exterior architectural conditions (dividers, metal paneling, shear walls, etc).



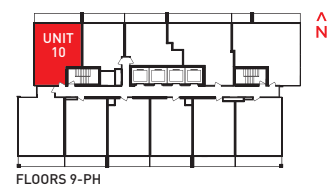
**TC743**  
 2 BED + STUDY  
 INTERIOR: 638 S.F.  
 EXTERIOR: 105 S.F.



Balconies are exclusive use common elements, and the location and size may be subject to change without notice, including but not restricted to changes or variations between suites in exterior architectural conditions (dividers, metal paneling, shear walls, etc).



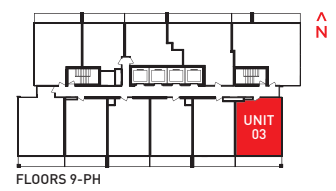
**TC818**  
 2 BED  
 INTERIOR: 699 S.F.  
 EXTERIOR: 119 S.F.



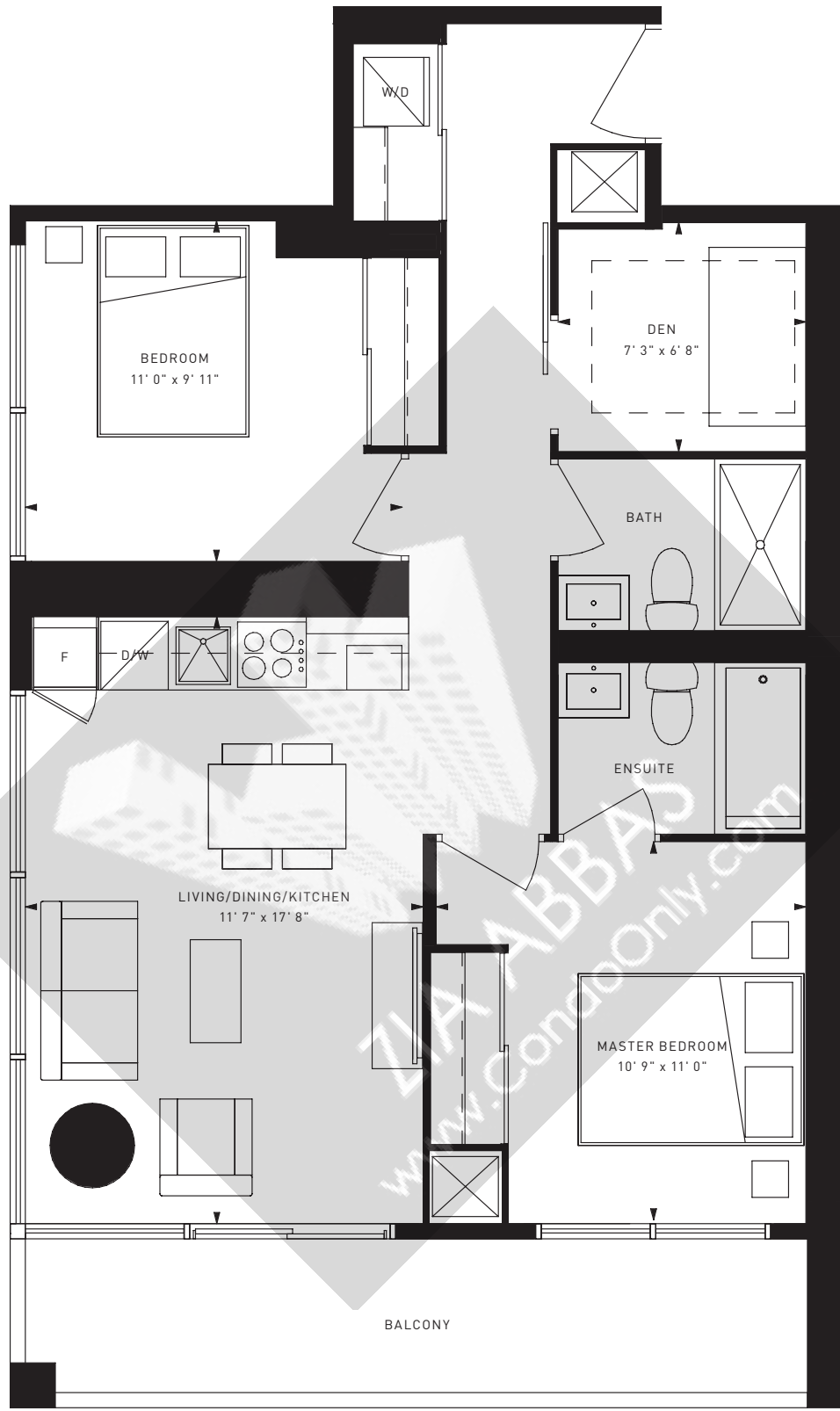
Balconies are exclusive use common elements, and the location and size may be subject to change without notice, including but not restricted to changes or variations between suites in exterior architectural conditions (dividers, metal paneling, shear walls, etc).



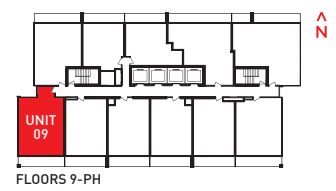
**TC816**  
 2 BED + STUDY  
 INTERIOR: 699 S.F.  
 EXTERIOR: 117 S.F.



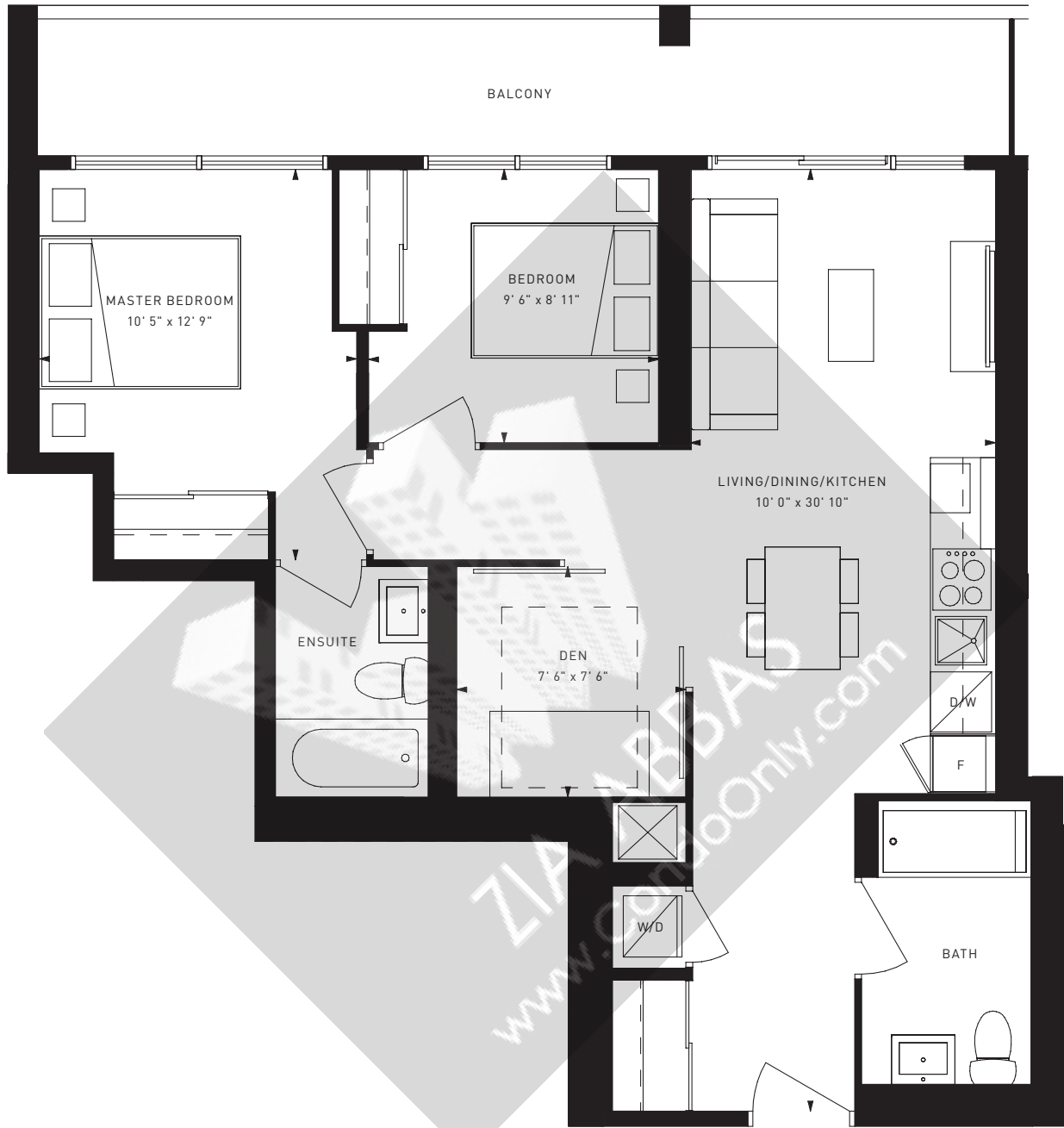
Balconies are exclusive use common elements, and the location and size may be subject to change without notice, including but not restricted to changes or variations between suites in exterior architectural conditions (dividers, metal paneling, shear walls, etc).



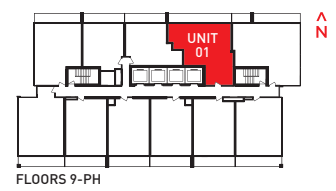
**TC895**  
 2 BED + DEN  
 INTERIOR: 778 S.F.  
 EXTERIOR: 117 S.F.



Balconies are exclusive use common elements, and the location and size may be subject to change without notice, including but not restricted to changes or variations between suites in exterior architectural conditions (dividers, metal paneling, shear walls, etc).

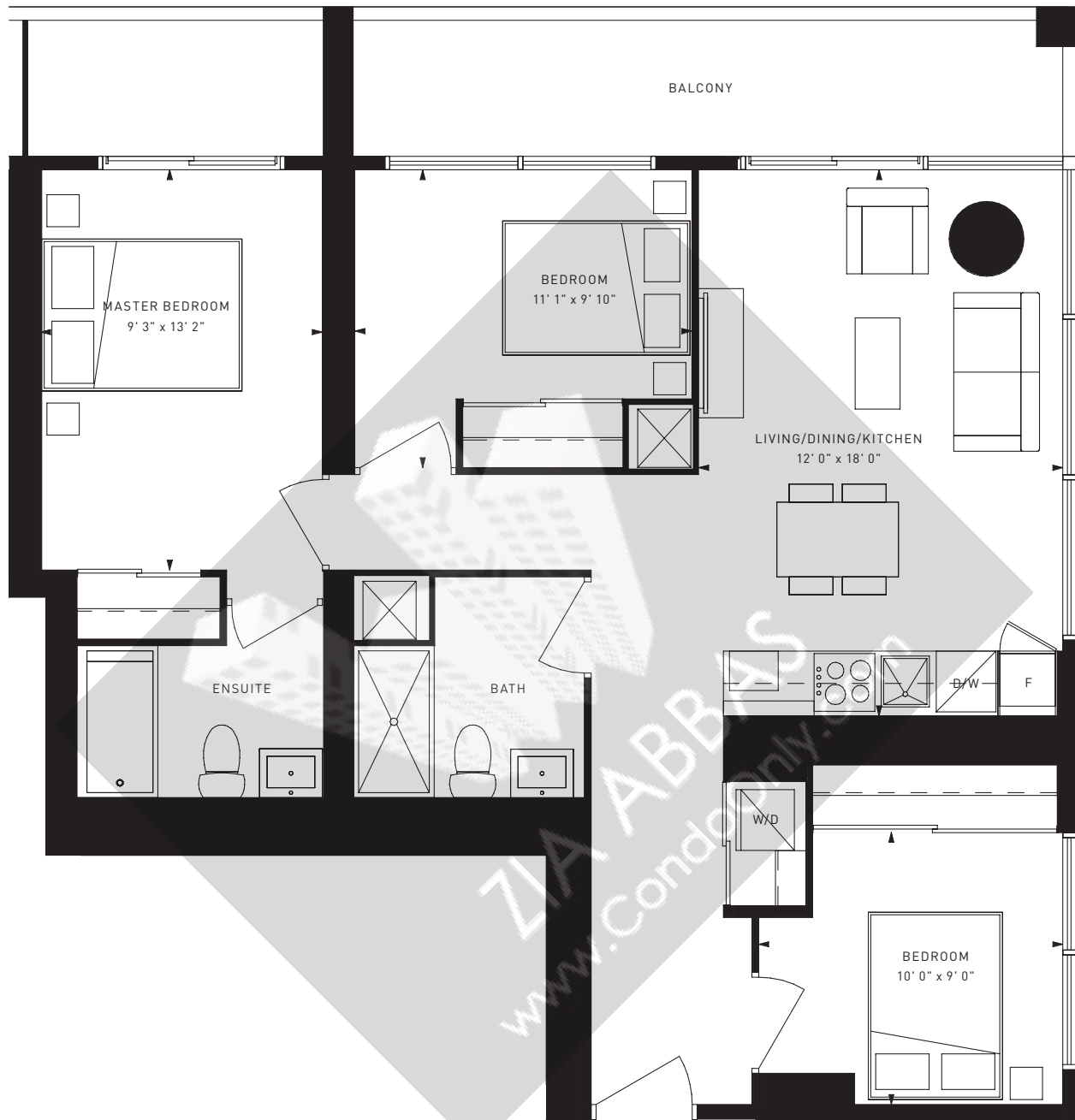


**TC979**  
 2 BED + DEN  
 INTERIOR: 820 S.F.  
 EXTERIOR: 159 S.F.

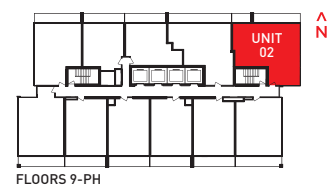


Balconies are exclusive use common elements, and the location and size may be subject to change without notice, including but not restricted to changes or variations between suites in exterior architectural conditions (dividers, metal paneling, shear walls, etc).





**TC1120**  
 3 BED  
 INTERIOR: 950 S.F.  
 EXTERIOR: 170 S.F.



Balconies are exclusive use common elements, and the location and size may be subject to change without notice, including but not restricted to changes or variations between suites in exterior architectural conditions (dividers, metal paneling, shear walls, etc).